

PROSPECTUS

12,000,000
Common Units
Representing Limited Partner Interests

THE CARLYLE GROUP

This is an offering of 12,000,000 common units representing limited partner interests in The Carlyle Group L.P. We are offering all of the common units in this offering.

We intend to use the net proceeds from our issuance and sale of 4,500,000 common units for general corporate purposes, including investments in our funds as well as investment capital for acquisitions of new fund platforms and strategies or other growth initiatives, to drive innovation across the broader Carlyle platform.

We intend to use the net proceeds from our issuance and sale of 7,500,000 common units, or 9,300,000 common units if the underwriters exercise in full their option to purchase additional common units, to purchase from certain holders, including certain of our directors and executive officers, an equivalent number of outstanding Carlyle Holdings partnership units.

Our common units are listed on the NASDAQ Global Select Market under the symbol "CG." The last reported sale price of our common units on March 3, 2014 was \$35.50 per common unit.

Investing in our common units involves risks. Limited partnerships are inherently different than corporations. See "[Risk Factors](#)" on page 18.

Neither the Securities and Exchange Commission nor any state securities commission has approved or disapproved of these securities or determined if this prospectus is truthful or complete. Any representation to the contrary is a criminal offense.

	<u>Per Unit</u>	<u>Total</u>
Price to public	\$ 33.50	\$ 402,000,000.00
Underwriting discount	\$ 0.871	\$ 10,452,000.00
Proceeds, before expenses, to The Carlyle Group L.P.	\$ 32.629	\$ 391,548,000.00

In addition, the underwriters have the option to purchase, within a period of 30 days beginning on the date of this prospectus, up to an additional 1,800,000 common units from us at the price to the public less the underwriting discount.

The underwriters expect to deliver the common units to purchasers on or about March 10, 2014.

J.P. Morgan
BofA Merrill Lynch

Citigroup

Sandler O'Neill + Partners, L.P.

Goldman, Sachs & Co.
Credit Suisse

The date of this prospectus is March 4, 2014

TABLE OF CONTENTS

Summary	1
Risk Factors	18
Forward-Looking Statements	18
Use of Proceeds	19
Price Range Of Common Units	20
Cash Distribution Policy	21
Conflicts of Interest and Fiduciary Responsibilities	23
Description Of Common Units	30
Material Provisions of the Carlyle Group L.P. Partnership Agreement	31
Material U.S. Federal Tax Considerations	43
Underwriting	61
Legal Matters	67
Experts	67
Where You Can Find More Information	68

Neither we nor the underwriters have authorized anyone to provide you with information or to make any representations about anything not contained in this prospectus or the documents incorporated by reference in this prospectus. You must not rely on any unauthorized information or representations. We are offering to sell, and seeking offers to buy, only the common units covered by this prospectus, and only under circumstances and in jurisdictions where it is lawful to do so. The information contained or incorporated by reference in this prospectus is current only as of its date, regardless of the time and delivery of this prospectus or of any sale of the common units. You should read carefully the entire prospectus, as well as the documents incorporated by reference in the prospectus, before making an investment decision.

Prior to the reorganization we effected in connection with the May 2012 initial public offering of the common units (the “IPO”), our business was owned by four holding entities: TC Group, L.L.C., TC Group Cayman, L.P., TC Group Investment Holdings, L.P. and TC Group Cayman Investment Holdings, L.P. We refer to these four holding entities collectively as the “Parent Entities.” The Parent Entities were under the common ownership and control of our senior Carlyle professionals and two strategic investors that owned minority interests in our business—entities affiliated with Mubadala Development Company, an Abu-Dhabi based strategic development and investment company (“Mubadala”), and California Public Employees’ Retirement System (“CalPERS”). Unless the context suggests otherwise, references in this prospectus to “Carlyle,” the “Company,” “we,” “us” and “our” refer (1) prior to the consummation of our reorganization into a holding partnership structure to Carlyle Group, which was comprised of the Parent Entities and their consolidated subsidiaries and (2) after our reorganization into a holding partnership structure, to The Carlyle Group L.P. and its consolidated subsidiaries. In addition, certain individuals engaged in our businesses own interests in the general partners of our existing carry funds. Certain of these individuals contributed a portion of these interests to us as part of the reorganization. We refer to these individuals, together with the owners of the Parent Entities prior to the reorganization and our initial public offering, collectively as our “pre-IPO owners.”

When we refer to the “partners of The Carlyle Group L.P.,” we are referring specifically to the common unitholders and our general partner, Carlyle Group Management L.L.C. (the “general partner”), and any others who may from time to time be partners of that specific Delaware limited partnership. When we refer to our “senior Carlyle professionals,” we are referring to the partner-level personnel of our firm. When we refer to “Carlyle Holdings,” we are referring, collectively, to Carlyle Holdings I L.P., Carlyle Holdings II L.P. and Carlyle Holdings III L.P. Our senior Carlyle professionals, together with CalPERS and Mubadala, were the owners of our Parent Entities prior to the reorganization. References in this prospectus to the ownership of the senior Carlyle professionals include the ownership of personal planning vehicles of these individuals.

“Carlyle funds,” “our funds” and “our investment funds” refer to the investment funds and vehicles advised by Carlyle. Our “carry funds” refer to those investment funds that we advise, including the buyout funds, growth

capital funds, real estate funds, infrastructure funds, certain energy funds and distressed debt and mezzanine funds (but excluding our structured credit funds, hedge funds, fund of funds vehicles and the NGP funds), where we receive a special residual allocation of income, which we refer to as a carried interest, in the event that specified investment returns are achieved by the fund. The “NGP management fee funds” refer to those funds advised by NGP Energy Capital Management (together with its affiliates and subsidiaries, “NGP”) from which we only receive management fees. The “NGP carry funds” refer to those funds advised by NGP from which we are entitled to receive a carried interest. Our “fund of funds vehicles” refers to those funds, accounts and vehicles advised by AlpInvest Partners B.V. (“AlpInvest”) and Metropolitan Real Estate Equity Management, LLC (“Metropolitan”).

“Fee-earning assets under management” or “Fee-earning AUM” refer to the assets we manage from which we derive recurring fund management fees. Our Fee-earning AUM generally equals the sum of:

(a) for carry funds and certain co-investment vehicles where the investment period has not expired and for Metropolitan fund of funds vehicles during the weighted-average investment period of the underlying funds, the amount of limited partner capital commitments, for AlpInvest fund of funds vehicles, the amount of external investor capital commitments during the commitment fee period, and for the NGP management fee funds and NGP carry funds, the amount of investor capital commitments before the first investment realization;

(b) for substantially all carry funds and certain co-investment vehicles where the investment period has expired and for Metropolitan fund of funds vehicles after the expiration of the weighted-average investment period of the underlying funds, the remaining amount of limited partner invested capital, and for the NGP management fee funds and NGP carry funds where the first investment has been realized, the amount of partner commitments less realized and written-off investments;

(c) the amount of aggregate Fee-earning collateral balance at par of our collateralized loan obligations (“CLOs”), as defined in the fund indentures (typically exclusive of equities and defaulted positions) as of the quarterly cut-off date for each CLO, and the reference portfolio notional amount of our synthetic collateralized loan obligations (“synthetic CLOs”);

(d) the external investor portion of the net asset value (pre-redemptions and subscriptions) of our long/short credit funds, emerging markets, multi-product macroeconomic and other hedge funds;

(e) the gross assets (including assets acquired with leverage), excluding cash and cash equivalents of our business development companies; and

(f) for AlpInvest fund of funds vehicles where the commitment fee period has expired, and certain carry funds where the investment period has expired, the lower of cost or fair value of invested capital.

“Assets under management” or “AUM” refers to the assets we manage. Our AUM equals the sum of the following:

(a) the fair value of the capital invested in our carry funds, co-investment vehicles, fund of funds vehicles and the NGP management fee funds and NGP carry funds plus the capital that we are entitled to call from investors in those funds and vehicles (including our commitments to those funds and vehicles and those of senior Carlyle professionals and employees) pursuant to the terms of their capital commitments to those funds and vehicles;

(b) the amount of aggregate collateral balance and principal cash at par of our CLOs (inclusive of all positions) and the reference portfolio notional amount of our synthetic CLOs;

(c) the net asset value (pre-redemptions and subscriptions) of our long/short credit, emerging markets, multi-product macroeconomic and other hedge funds; and

(d) the gross assets (including assets acquired with leverage) of our business development companies.

We include in our calculation of AUM and Fee-earning AUM certain energy and renewable resources funds that we jointly advise with Riverstone Holdings L.L.C. (“Riverstone”) and certain NGP management fee funds and NGP carry funds.

For our carry funds, co-investment vehicles, fund of funds vehicles, NGP management fee funds and NGP carry funds, total AUM includes the fair value of the capital invested, whereas Fee-earning AUM includes the amount of capital commitments or the remaining amount of invested capital, depending on whether the investment period for the fund has expired. As such, Fee-earning AUM may be greater than total AUM when the aggregate fair value of the remaining investments is less than the cost of those investments.

Our calculations of AUM and Fee-earning AUM may differ from the calculations of other alternative asset managers. As a result, these measures may not be comparable to similar measures presented by other alternative asset managers. In addition, our calculation of AUM (but not Fee-earning AUM) includes uncalled commitments to, and the fair value of invested capital in, our investment funds from Carlyle and our personnel, regardless of whether such commitments or invested capital are subject to management or performance fees. Our calculations of AUM or Fee-earning AUM are not based on any definition of AUM or Fee-earning AUM that is set forth in the agreements governing the investment funds that we manage.

SUMMARY

This summary does not contain all the information you should consider before investing in our common units. You should read this entire prospectus and the documents incorporated by reference herein carefully, including the financial statements and related notes and reconciliations contained or incorporated by reference herein and the section entitled "Risk Factors" contained herein and in our Annual Report on Form 10-K for the year ended December 31, 2013, filed with the SEC on February 27, 2014 (File No. 001-35538) (the "Annual Report"), which is incorporated by reference in this prospectus.

The Carlyle Group

We are one of the world's largest and most diversified multi-product global alternative asset management firms. We advise an array of specialized investment funds and other investment vehicles that invest across a range of industries, geographies, asset classes and investment strategies and seek to deliver attractive returns for our fund investors. Since our firm was founded in Washington, D.C. in 1987, we have grown to become a leading global alternative asset manager with approximately \$189 billion in AUM across 118 funds and 106 fund of funds vehicles as of December 31, 2013. We have more than 1,500 employees, including more than 700 investment professionals in 34 offices across six continents, and we serve more than 1,650 active carry fund investors from 76 countries. Across our Corporate Private Equity and Real Assets segments, we have investments in over 200 portfolio companies that employ more than 600,000 people.

We operate our business across four segments: (1) Corporate Private Equity, (2) Global Market Strategies, (3) Real Assets and (4) Solutions.

Corporate Private Equity. Our Corporate Private Equity segment, established in 1990 with our first U.S. buyout fund, advises our buyout and growth capital funds, which pursue a wide variety of corporate investments of different sizes and growth potentials. Our 31 active Corporate Private Equity funds are each carry funds. They are organized and operated by geography or industry and are advised by separate teams of local professionals who live and work in the markets where they invest. In our Corporate Private Equity segment we also have 62 active external co-investment entities. We believe this diversity of funds and entities allows us to deploy more targeted and specialized investment expertise and strategies and offers our fund investors the ability to tailor their investment choices.

Our Corporate Private Equity teams have two primary areas of focus:

- **Buyout Funds.** Our buyout teams advise a diverse group of 23 active funds that invest in transactions that focus either on a particular geography (e.g., United States, Europe, Asia, Japan, MENA, Sub-Saharan Africa or South America) or a particular industry. We continually seek to expand and diversify our buyout portfolio into new areas where we see opportunity for future growth. As of December 31, 2013, our buyout funds had, in the aggregate, approximately \$60 billion in AUM.
- **Growth Capital Funds.** Our eight active growth capital funds are advised by four regionally focused teams in the United States, Europe and Asia, with each team generally focused on middle-market and growth companies consistent with specific regional investment considerations. The investment mandate for our growth capital funds is to seek out companies with the potential for growth, strategic redirection and operational improvements. These funds typically do not invest in early stage or venture-type investments. As of December 31, 2013, our growth capital funds had, in the aggregate, approximately \$5 billion in AUM.

From inception through December 31, 2013, our Corporate Private Equity segment has invested approximately \$58 billion in 471 investments. Of that total, we have invested 58% in 230 investments in North

and South America, 23% in 107 investments in Europe, the Middle East and Africa and 19% in 134 investments in the Asia-Pacific region. We have fully realized 308 of these investments, meaning that our funds have completely exited, and no longer own an interest in, those investments.

The following table presents certain data about our Corporate Private Equity segment as of December 31, 2013 (dollar amounts in billions; compound annual growth rate is presented since December 31, 2003; amounts invested include co-investments).

<u>AUM</u>	<u>% of Total AUM</u>	<u>AUM CAGR</u>	<u>Fee-earning AUM</u>	<u>Active Investments</u>	<u>Active Funds</u>	<u>Available Capital</u>	<u>Investment Professionals</u>	<u>Amount Invested Since Inception</u>	<u>Investments Since Inception</u>
\$65	34%	20%	\$ 43	163	31	\$ 25	262	\$ 58	471

Global Market Strategies. Our Global Market Strategies segment, established in 1999 with our first high yield fund, advises a group of 61 active funds that pursue investment strategies including long/short credit, long/short emerging markets equities, macroeconomic strategies, commodities trading, leveraged loans and structured credit, energy mezzanine opportunities, middle market lending and distressed debt.

Primary areas of focus for our Global Market Strategies teams include:

- **Structured Credit Funds.** Our structured credit funds invest primarily in performing senior secured bank loans through structured vehicles and other investment vehicles. As of December 31, 2013, our structured credit team advised 39 funds in the United States and Europe totaling, in the aggregate, approximately \$15.8 billion in AUM.
- **Distressed and Corporate Opportunities.** Our distressed and corporate opportunities funds generally invest in liquid and illiquid securities and obligations, including secured debt, senior and subordinated unsecured debt, convertible debt obligations, preferred stock and public and private equity of financially distressed companies in defensive and asset-rich industries. In certain investments, our funds may seek to restructure pre-reorganization debt claims into controlling positions in the equity of reorganized companies. As of December 31, 2013, our distressed and corporate opportunities team advised three funds totaling, in the aggregate, approximately \$1.4 billion in AUM.
- **Middle Market Finance.** Our middle market finance business comprises our business development companies (“BDCs”), a CLO consisting of middle market senior, first lien loans, and our corporate mezzanine funds, which invest in the first-lien, second-lien and mezzanine loans of middle-market companies, typically defined as companies with annual EBITDA ranging from \$10 million to \$100 million that lack access to the broadly syndicated loan and bond markets. As of December 31, 2013, our BDC investment team advised three funds totaling, in the aggregate, approximately \$1.8 billion in AUM and our corporate mezzanine team advised two funds totaling, in the aggregate, approximately \$0.6 billion in AUM.
- **Energy Mezzanine Opportunities.** Our energy mezzanine opportunities team invests primarily in privately negotiated mezzanine debt investments in North American energy and power projects and companies. As of December 31, 2013, our energy mezzanine opportunities team advised one fund with approximately \$1.8 billion in AUM.
- **Long/Short Credit.** Claren Road Asset Management LLC (“Claren Road”) advises two long/short credit hedge funds focusing on the global high grade and high yield markets totaling, in the aggregate, approximately \$8.0 billion in AUM as of December 31, 2013. Claren Road seeks to profit from market mispricing of long and/or short positions in corporate bonds and loans, and their derivatives, across investment grade, below investment grade (high yield) or distressed companies.

- **Emerging Market Equity and Macroeconomic Strategies.** Emerging Sovereign Group LLC (“ESG”) advises seven emerging markets equities and macroeconomic hedge funds with approximately \$5.2 billion in the aggregate of AUM as of December 31, 2013. ESG’s emerging markets equities funds invest in publicly traded equities across a range of developing countries. ESG’s macroeconomic funds pursue investment strategies in developed and developing countries, and opportunities resulting from changes in the global economic environment.
- **Commodities.** Vermillion Asset Management, a New York-based commodities investment manager (“Vermillion”) advises four funds totaling in the aggregate, approximately \$0.9 billion of AUM as of December 31, 2013. Vermillion’s investment strategies include relative value, enhanced index and long-biased physical commodities. Vermillion seeks to produce positive, uncorrelated returns, through a liquid, relative-value, low volatility approach to trading both physical commodities and their derivatives.

The following table presents certain data about our Global Market Strategies segment as of December 31, 2013 (dollar amounts in billions; compound annual growth rate is presented since December 31, 2003).

<u>AUM</u>	<u>% of Total AUM</u>	<u>AUM CAGR</u>	<u>Fee-earning AUM</u>	<u>Active Funds</u>	<u>Investment Professionals(1)</u>
\$35	19%	30%	\$ 33	61	207

(1) Includes 57 middle-office and back office professionals.

Real Assets. Our Real Assets segment, established in 1997 with our first U.S. real estate fund, advises our 26 active carry funds focused on real estate, infrastructure and energy and natural resources (including power) and also includes the eight NGP management fee funds and one NGP carry fund. This segment pursues investment opportunities across a diverse array of tangible assets, such as office buildings, hotels, retail and residential properties, industrial properties and senior-living facilities, as well as oil and gas exploration and production midstream, refining and marketing, power generation, pipelines, wind farms, refineries, airports, toll roads, transportation, water utility and agriculture, as well as the companies providing services or otherwise related to them.

Our Real Assets teams have two primary areas of focus:

- **Real Estate.** Our nine active real estate funds pursue real estate investment opportunities in Asia, Europe and the United States and generally focus on acquiring single-property assets rather than large-cap companies with real estate portfolios. Our team of more than 120 real estate investment professionals has made over 570 investments in 186 cities/ metropolitan statistical areas around the world as of December 31, 2013, including office buildings, hotels, retail and residential properties, industrial properties and senior living facilities. As of December 31, 2013, our real estate funds had, in the aggregate, approximately \$12 billion in AUM.
- **Energy and Natural Resources.** Our energy and natural resources activities focus on buyouts, growth capital investments and strategic joint ventures in the midstream, upstream, power and oilfield services sectors, the renewable and alternative sectors and the energy and power industries around the world. Historically, we conducted our energy activities jointly with Riverstone, advising five funds with approximately \$12 billion in AUM as of December 31, 2013 (we refer to these energy funds as our “Legacy Energy funds”). Currently, we conduct our North American energy investing through our partnership with NGP Energy Capital Management, an Irving, Texas-based energy investor in which we acquired an equity interest in December 2012, advising nine funds with approximately \$12 billion in AUM as of December 31, 2013. Additionally in 2013, we formed a power team to focus on

investment opportunities in the North American power generation sector. Leveraging the expertise of the operating professionals at Cogentrix Energy L.L.C., one of our portfolio companies, the team seeks investments where it can obtain direct or indirect operational control to facilitate the implementation of technical enhancements. As of December 31, 2013, the power team managed \$497 million in AUM through one fund. In 2013, we also formed an international energy investment team as a part of our growing energy platform, which significantly expands our ability to invest in a full range of energy assets around the world. As of December 31, 2013, the international energy team managed \$669 million in AUM through one fund. We also have an infrastructure team that focuses on investments in infrastructure companies and assets. As of December 31, 2013, we advised one infrastructure fund with approximately \$1 billion in AUM.

Our Real Assets carry funds, including Carlyle-advised co-investment vehicles, have from inception through December 31, 2013, invested on a global basis approximately \$33 billion in a total of 658 investments (including more than 60 portfolio companies). Of that total, we have invested 72% in 496 investments in North and South America, 21% in 113 investments in Europe, the Middle East and Africa and 7% in 49 investments in the Asia-Pacific region. We have fully realized 298 of these investments, meaning that our funds have completely exited, and no longer own an interest in, those investments.

The following table presents certain data about our Real Assets segment as of December 31, 2013 (dollar amounts in billions; compound annual growth rate is presented since December 31, 2003; amounts invested include co-investments).

<u>AUM</u>	<u>% of Total AUM</u>	<u>AUM CAGR</u>	<u>Fee-earning AUM</u>	<u>Active Investments(2)</u>	<u>Active Funds(3)</u>	<u>Available Capital</u>	<u>Investment Professionals(1)</u>	<u>Amount Invested Since Inception(2)</u>	<u>Investments Since Inception(2)</u>
\$39	21%	32%	\$ 28	360	26	\$ 9	138	\$ 33	658

- (1) Excludes Riverstone and NGP employees.
- (2) Excludes investment activity of the NGP management fee funds.
- (3) Includes the eight NGP management fee funds and one NGP carry fund.

Solutions. Our Solutions segment primarily operates through AlpInvest and our newly acquired businesses, Metropolitan and Diversified Global Asset Management Corporation (“DGAM”). In August 2013, we acquired the remaining 40% of AlpInvest and now own 100% of the firm. AlpInvest is one of the world’s largest investors in private equity and advises a global private equity fund of funds program and related co-investment and secondary activities. In November 2013, we acquired Metropolitan, one of the largest managers of indirect investments in global real estate, which manages 22 funds of funds vehicles with \$2 billion in AUM as of December 31, 2013. Metropolitan’s principal strategic focus is on value add/opportunistic real estate investments through more than 85 highly focused, specialist real estate managers across the globe as of December 31, 2013. On February 3, 2014, we also acquired DGAM, a global manager of hedge funds based in Toronto, Canada, with \$6.6 billion in managed and advised assets as of December 31, 2013. DGAM’s historical investor base has been institutional and includes some of the world’s largest and most sophisticated public and private pension funds, endowments and sovereign wealth funds.

Each of these businesses independently seeks to provide best-in-class investment capabilities. We believe that the combination of AlpInvest, Metropolitan and DGAM, on the foundation of our global platform, will represent a significant resource for our investors and clients. We will strive to use this resource to deliver customized solutions to our investors to meet their individual investment goals.

The Solutions platform comprises three core businesses (AlpInvest, Metropolitan and DGAM):

- **AlpInvest** invests primarily through Private Equity Fund Investments, Private Equity Co-Investments and Private Equity Secondary Investments vehicles.
 - **Private Equity Fund Investments.** AlpInvest fund of funds vehicles make investment commitments directly to buyout, growth capital, venture and other alternative asset funds advised by other general partners (“portfolio funds”). As of December 31, 2013, AlpInvest advised 38 fund of funds vehicles totaling, in the aggregate, approximately \$32 billion in AUM.
 - **Private Equity Co-investments.** AlpInvest invests alongside other private equity and mezzanine funds in which it typically has a fund investment throughout Europe, North America and Asia (for example, when an investment opportunity is too large for a particular fund, the sponsor of the fund may seek to raise additional “co-investment” capital from sources such as AlpInvest). As of December 31, 2013, AlpInvest’s co-investment programs were conducted through 24 fund of funds vehicles totaling, in the aggregate, approximately \$8 billion in AUM.
 - **Private Equity Secondary Investments.** AlpInvest also advises funds that acquire interests in portfolio funds in secondary market transactions. Private equity investors who desire to sell or restructure their pre-existing investment commitments to a fund may negotiate to sell the fund interests to AlpInvest. In this manner, AlpInvest’s secondary investments team provides liquidity and restructuring alternatives for third-party private equity investors. As of December 31, 2013, AlpInvest’s secondary investments program was conducted through 22 fund of funds vehicles totaling, in the aggregate, approximately \$8 billion in AUM.
- **Metropolitan** fund of funds vehicles make investment commitments directly to real estate focused portfolio funds. Since inception in 2003 through December 31, 2013, Metropolitan has invested with more than 80 managers. As of December 31, 2013, Metropolitan advised 22 fund of funds vehicles totaling, in the aggregate, approximately \$2 billion in AUM.
- **DGAM** builds and actively manages hedge fund portfolios on behalf of its institutional clients. It invests globally and seeks to source strong managers in attractive strategies while minimizing constraints on investment activity. We acquired DGAM on February 3, 2014. As of December 31, 2013, DGAM managed and advised \$6.6 billion through 13 vehicles and three separately managed accounts. In addition to assembling hedge fund portfolios, DGAM invests directly through its complex credit, liquid risk premia and trend following funds.

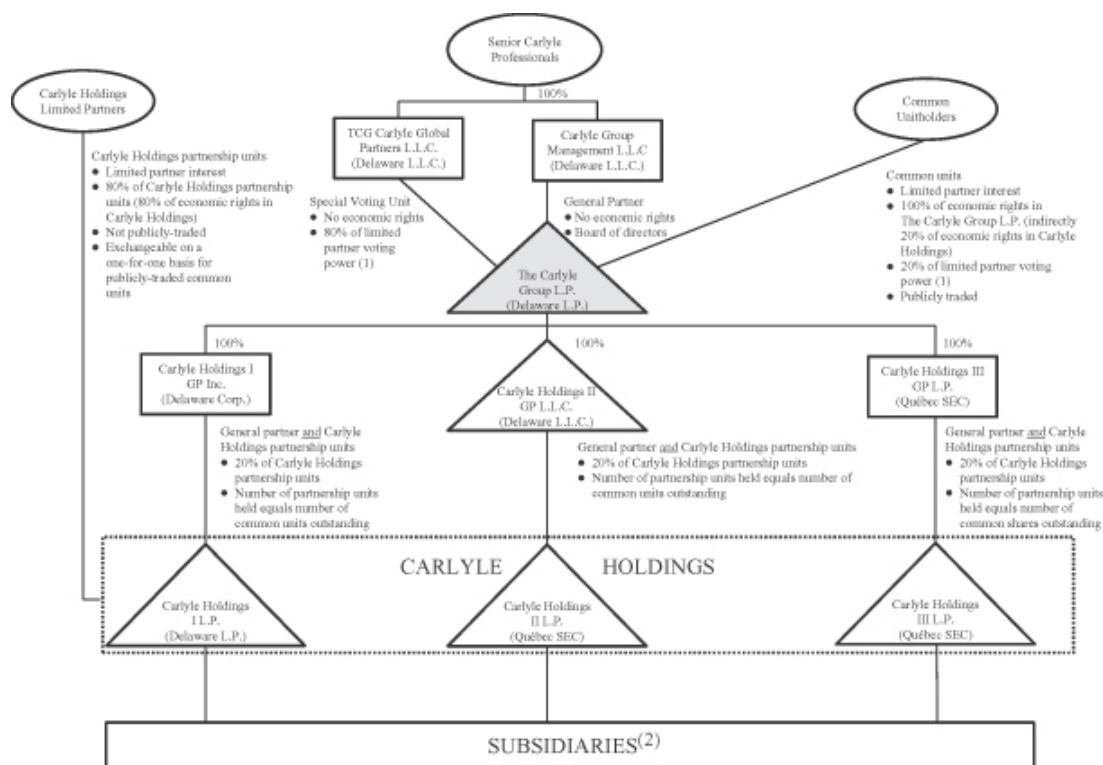
The following table presents certain data about our Solutions segment as of December 31, 2013 (dollar amounts in billions) and excludes DGAM, which we acquired on February 3, 2014.

<u>AUM(1)</u>	<u>% of Total AUM</u>	<u>Fee-earning AUM</u>	<u>Fund of Funds Vehicles</u>	<u>Available Capital</u>	<u>Investment Professionals</u>	<u>Amount Invested Since Inception(2)</u>
\$50	26%	\$ 35	106	\$ 17	98	\$ 48

- (1) Under our arrangements with the historical owners and management team of AlpInvest, the management team and employees of AlpInvest are allocated all carried interest in respect of the historical investments and commitments to our fund of funds vehicles that existed as of July 1, 2011 (including any options to increase any such commitments exercised after such date), 85% of the carried interest in respect of commitments from the historical owners of AlpInvest for the period between 2011 and 2020 and 60% of the carried interest in respect of all other commitments (including all future commitments from third parties).
- (2) Excludes Metropolitan.

Organizational Structure

The simplified diagram below depicts our organizational structure. Ownership information in the diagram below is presented after giving effect to this offering and the application of the use of proceeds therefrom. The diagram does not depict all of our subsidiaries, including intermediate holding companies through which certain of the subsidiaries depicted are held. As discussed in greater detail below, The Carlyle Group L.P. holds, through wholly-owned subsidiaries, a number of Carlyle Holdings partnership units that is equal to the number of common units that The Carlyle Group L.P. has issued and benefits from the income of Carlyle Holdings to the extent of its equity interests in the Carlyle Holdings partnerships. While the holders of common units of The Carlyle Group L.P. are entitled to all of the economic rights in The Carlyle Group L.P., the limited partners of the Carlyle Holdings partnerships, like the wholly-owned subsidiaries of The Carlyle Group L.P., hold Carlyle Holdings partnership units that entitle them to economic rights in Carlyle Holdings to the extent of their equity interests in the Carlyle Holdings partnerships. Public investors do not directly hold equity interests in the Carlyle Holdings partnerships.



(1) The Carlyle Group L.P. common unitholders have only limited voting rights and have no right to remove our general partner or, except in limited circumstances, elect the directors of our general partner. TCG Carlyle Global Partners L.L.C., an entity wholly-owned by our senior Carlyle professionals, holds a special voting unit in The Carlyle Group L.P. that entitles it, on those few matters that may be submitted for a vote of The Carlyle Group L.P. common unitholders, to participate in the vote on the same basis as the common unitholders and provides it with a number of votes that is equal to the aggregate number of vested and unvested partnership units in Carlyle Holdings held by the limited partners of Carlyle Holdings on the relevant record date. See “Material Provisions of The Carlyle Group L.P. Partnership Agreement—Withdrawal or Removal of the General Partner,” “—Meetings; Voting” and “—Election of Directors of General Partner.”

- (2) Certain individuals engaged in our business own interests directly in selected subsidiaries, including, in certain instances, entities that receive management fees from funds that we advise.

The Carlyle Group L.P. conducts all of its material business activities through Carlyle Holdings. Each of the Carlyle Holdings partnerships was formed to hold our interests in different businesses. Carlyle Holdings I L.P. owns all of our U.S. fee-generating businesses and many of our non-U.S. fee-generating businesses, as well as our carried interests (and other investment interests) that derive income that we believe is not qualifying income for purposes of the U.S. federal income tax publicly-traded partnership rules and certain of our carried interests (and other investment interests) that do not relate to investments in stock of corporations or in debt, such as equity investments in entities that are pass-through for U.S. federal income tax purposes. Carlyle Holdings II L.P. holds a variety of assets, including our carried interests in many of the investments by our carry funds in entities that are treated as domestic corporations for U.S. federal income tax purposes and in certain non-U.S. entities. Certain of our non-U.S. fee-generating businesses, as well as our non-U.S. carried interests (and other investment interests) that derive income that we believe is not qualifying income for purposes of the U.S. federal income tax publicly-traded partnership rules and certain of our non-U.S. carried interests (and other investment interests) that do not relate to investments in stock of corporations or in debt, such as equity investments in entities that are passthrough for U.S. federal income tax purposes are held by Carlyle Holdings III L.P.

The Carlyle Group L.P. has wholly-owned subsidiaries that serve as the general partners of the Carlyle Holdings partnerships: Carlyle Holdings I GP Inc. (a Delaware corporation that is a domestic corporation for U.S. federal income tax purposes), Carlyle Holdings II GP L.L.C. (a Delaware limited liability company that is a disregarded entity and not an association taxable as a corporation for U.S. federal income tax purposes) and Carlyle Holdings III GP L.P. (a Québec société en commandite that is a foreign corporation for U.S. federal income tax purposes) serve as the general partners of Carlyle Holdings I L.P., Carlyle Holdings II L.P. and Carlyle Holdings III L.P., respectively. Carlyle Holdings I GP Inc. and Carlyle Holdings III GP L.P. serve as the general partners of Carlyle Holdings I L.P. and Carlyle Holdings III L.P., respectively, through wholly-owned subsidiaries that are disregarded for federal income tax purposes. We refer to Carlyle Holdings I GP Inc., Carlyle Holdings II GP L.L.C. and Carlyle Holdings III GP L.P. collectively as the “Carlyle Holdings General Partners.”

Holding Partnership Structure

As discussed in “Material U.S. Federal Tax Considerations—Consequences to Non-U.S. Holders of Common Units,” The Carlyle Group L.P. is treated as a partnership and not as a corporation for U.S. federal income tax purposes, although our partnership agreement does not restrict our ability to take actions that may result in our being treated as an entity taxable as a corporation for U.S. federal (and applicable state) income tax purposes. An entity that is treated as a partnership for U.S. federal income tax purposes is not a taxable entity and incurs no U.S. federal income tax liability. Instead, each partner is required to take into account its allocable share of items of income, gain, loss and deduction of the partnership in computing its U.S. federal income tax liability, whether or not cash distributions are made. Investors in this offering will become limited partners of The Carlyle Group L.P. Accordingly, an investor in this offering generally will be required to pay U.S. federal income taxes with respect to the income and gain of The Carlyle Group L.P. that is allocated to such investor, even if The Carlyle Group L.P. does not make cash distributions. We believe that the Carlyle Holdings partnerships should also be treated as partnerships and not as corporations for U.S. federal income tax purposes. Accordingly, the holders of partnership units in Carlyle Holdings, including The Carlyle Group L.P.’s wholly-owned subsidiaries, incur U.S. federal, state and local income taxes on their proportionate share of any net taxable income of Carlyle Holdings. See “Material U.S. Federal Tax Considerations—Consequences to Non-U.S. Holders of Common Units” for more information about the tax treatment of The Carlyle Group L.P. and Carlyle Holdings.

Each of the Carlyle Holdings partnerships has an identical number of partnership units outstanding, and we use the terms “Carlyle Holdings partnership unit” or “partnership unit in/of Carlyle Holdings” to refer

collectively to a partnership unit in each of the Carlyle Holdings partnerships. The Carlyle Group L.P. holds, through wholly-owned subsidiaries, a number of Carlyle Holdings partnership units equal to the number of common units that The Carlyle Group L.P. has issued. The Carlyle Holdings partnership units that are held by The Carlyle Group L.P.'s wholly-owned subsidiaries are economically identical to the Carlyle Holdings partnership units that are held by the limited partners of the Carlyle Holdings partnerships. Accordingly, the income of Carlyle Holdings benefits The Carlyle Group L.P. to the extent of its equity interest in Carlyle Holdings.

The Carlyle Group L.P. is managed and operated by our general partner, Carlyle Group Management L.L.C., to whom we refer as "our general partner," which is in turn wholly-owned by our senior Carlyle professionals. Our general partner does not have any business activities other than managing and operating us. We reimburse our general partner and its affiliates for all costs incurred in managing and operating us, and our partnership agreement provides that our general partner determines the expenses that are allocable to us. Although there are no ceilings on the expenses for which we will reimburse our general partner and its affiliates, the expenses to which they may be entitled to reimbursement from us, such as director fees, historically have not been, and are not expected to be, material.

Certain Corporate Governance Considerations

Voting. Unlike the holders of common stock in a corporation, our common unitholders have only limited voting rights and have no right to remove our general partner or, except in the limited circumstances described below, elect the directors of our general partner. In addition, TCG Carlyle Global Partners L.L.C., an entity wholly-owned by our senior Carlyle professionals, holds a special voting unit that provides it with a number of votes on any matter that may be submitted for a vote of our common unitholders (voting together as a single class on all such matters) that is equal to the aggregate number of vested and unvested Carlyle Holdings partnership units held by the limited partners of Carlyle Holdings. Accordingly, our senior Carlyle professionals generally will have sufficient voting power to determine the outcome of those few matters that may be submitted for a vote of the limited partners of The Carlyle Group L.P., such as the approval of amendments to the limited partnership agreement of The Carlyle Group L.P. that the limited partnership agreement does not authorize our general partner to approve without the consent of the limited partners and the approval of certain mergers or sales of all or substantially all of our assets. We refer to our common units (other than those held by any person whom our general partner may from time to time with such person's consent designate as a non-voting common unitholder) and our special voting units as "voting units." Our common unitholders' voting rights are further restricted by the provision in our partnership agreement stating that any common units held by a person that beneficially owns 20% or more of any class of The Carlyle Group L.P. common units then outstanding (other than our general partner and its affiliates, or a direct or subsequently approved transferee of our general partner or its affiliates) cannot be voted on any matter.

Election of Directors. In general, our common unitholders have no right to elect the directors of our general partner. However, when our Senior Carlyle professionals and other then-current or former Carlyle personnel hold less than 10% of the limited partner voting power, our common unitholders will have the right to vote in the election of the directors of our general partner. This voting power condition is measured on January 31 of each year and will be triggered if the total voting power held by holders of the special voting units in The Carlyle Group L.P. (including voting units held by our general partner and its affiliates) in their capacity as such, or otherwise held by then-current or former Carlyle personnel (treating voting units deliverable to such persons pursuant to outstanding equity awards as being held by them), collectively, constitutes less than 10% of the voting power of the outstanding voting units of The Carlyle Group L.P. As of December 31, 2013, the percentage of the voting power of The Carlyle Group L.P. limited partners collectively held by those categories of holders and calculated in this manner was approximately 85%. Unless and until the foregoing voting power condition is satisfied, our general partner's board of directors will be elected in accordance with its limited liability company

agreement, which provides that directors may be appointed and removed by members of our general partner holding a majority in interest of the voting power of the members, which voting power is allocated to each member ratably according to his or her aggregate relative ownership of our common units and partnership units. See “Material Provisions of The Carlyle Group L.P. Partnership Agreement—Election of Directors of General Partner.”

Conflicts of Interest and Duties of Our General Partner. Although our general partner has no business activities other than the management of our business, conflicts of interest may arise in the future between us and our common unitholders, on the one hand, and our general partner and its affiliates, on the other. The resolution of these conflicts may not always be in our best interests or that of our common unitholders. In addition, we have certain duties and obligations to our investment funds and their investors and we expect to regularly take actions with respect to the purchase or sale of investments in our investment funds, the structuring of investment transactions for those funds or otherwise in a manner consistent with such duties and obligations but that might at the same time adversely affect our near-term results of operations or cash flow. Our partnership agreement limits the liability of, and reduces or eliminates the duties (including fiduciary duties) owed by, our general partner to our common unitholders and also restricts the remedies available to common unitholders for actions that might otherwise constitute breaches of our general partner’s duties (including fiduciary duties). By purchasing our common units, you are treated as having consented to the provisions set forth in our partnership agreement, including provisions regarding conflicts of interest situations that, in the absence of such provisions, might be considered a breach of fiduciary or other duties under applicable state law. See “Conflicts of Interest and Fiduciary Responsibilities.”

The Carlyle Group L.P. was formed in Delaware on July 18, 2011. Our principal executive offices are located at 1001 Pennsylvania Avenue, NW, Washington, D.C. 20004-2505, and our telephone number is (202) 729-5626.

The Offering

Common units offered by The Carlyle Group L.P.	12,000,000 common units.
Option to purchase additional common units	To the extent that the underwriters sell more than 12,000,000 common units, the underwriters have the option to purchase up to an additional 1,800,000 common units from us at the initial price to the public less the underwriting discount.
Common units outstanding as of the date of this prospectus, after giving effect to this offering and assuming no exercise of the underwriters' option to purchase additional common units from The Carlyle Group L.P.	62,292,165 common units (or 316,810,907 common units if all outstanding vested and unvested Carlyle Holdings partnership units, other than those held by The Carlyle Group L.P. and/or its wholly-owned subsidiaries, were exchanged for newly-issued common units on a one-for-one basis).
Common units outstanding as of the date of this prospectus, after giving effect to this offering and assuming full exercise of the underwriters' option to purchase additional common units from The Carlyle Group L.P.	64,092,165 common units (or 316,810,907 common units if all outstanding vested and unvested Carlyle Holdings partnership units, other than those held by The Carlyle Group L.P. and/or its wholly-owned subsidiaries, were exchanged for newly-issued common units on a one-for-one basis).
Use of proceeds	<p>We estimate that the net proceeds from the sale of the common units in this offering, after deducting underwriting discounts and commissions and the estimated offering expenses payable by us, will be approximately \$390.8 million (or \$449.5 million if the underwriters exercise in full their option to purchase additional common units).</p> <p>We intend to use the net proceeds from our issuance and sale of 4,500,000 common units (approximately \$146.1 million) for general corporate purposes, including investments in our funds as well as investment capital for acquisitions of new fund platforms and strategies or other growth initiatives, to drive innovation across the broader Carlyle platform.</p> <p>We intend to use the net proceeds from our issuance and sale of 7,500,000 common units (approximately \$244.7 million), or 9,300,000 common units (approximately \$303.4 million) if the underwriters exercise in full their option to purchase additional</p>

common units, to purchase from certain holders, including certain of our directors and executive officers, an equivalent number of outstanding Carlyle Holdings partnership units. The issuance of common units described in this paragraph will not have an impact on the number of outstanding common units on a “fully-exchanged” basis (i.e. the number of common units that would be outstanding if all vested and unvested Carlyle Holdings partnership units, other than those held by The Carlyle Group L.P. and/or its wholly-owned subsidiaries, were exchanged for newly-issued common units on a one-for-one basis).

Voting rights

Our general partner, Carlyle Group Management L.L.C., manages all of our operations and activities. You will not hold an interest in our general partner, which is wholly-owned by our senior Carlyle professionals. Unlike the holders of common stock in a corporation, you will have only limited voting rights and will have no right to remove our general partner or, except in limited circumstances, elect the directors of our general partner.

In addition, TCG Carlyle Global Partners L.L.C., an entity wholly-owned by our senior Carlyle professionals, holds a special voting unit that provides it with a number of votes on any matter that may be submitted for a vote of our common unitholders that is equal to the aggregate number of vested and unvested Carlyle Holdings partnership units held by the limited partners of Carlyle Holdings. Accordingly, our senior Carlyle professionals generally have sufficient voting power to determine the outcome of those few matters that may be submitted for a vote of the limited partners of The Carlyle Group L.P. Our common unitholders’ voting rights are further restricted by the provision in our partnership agreement stating that any common units held by a person that beneficially owns 20% or more of any class of The Carlyle Group L.P. common units then outstanding (other than our general partner and its affiliates, or a direct or subsequently approved transferee of our general partner or its affiliates) cannot be voted on any matter. See “Material Provisions of The Carlyle Group L.P. Partnership Agreement—Withdrawal or Removal of the General Partner,” “—Meetings; Voting” and “—Election of Directors of General Partner.”

Cash distribution policy

We currently anticipate that we will cause Carlyle Holdings to make quarterly distributions to its partners, including The Carlyle Group L.P.’s wholly owned subsidiaries, that will enable The Carlyle Group L.P. to pay a quarterly distribution of \$0.16 per common unit for each of the first three quarters of each year and for the fourth quarter of each year, to pay a distribution of at least \$0.16 per common unit that, taken together with the prior quarterly distributions in respect of that year, represents its share, net of taxes and amounts payable under the tax receivable agreement, of our Distributable Earnings in excess of the amount determined by our general partner to be necessary or appropriate to provide for the conduct of our business, to make

appropriate investments in our business and our funds or to comply with applicable law or any of our financing agreements. We anticipate that the aggregate amount of our distributions for most years will be less than our Distributable Earnings for that year due to these funding requirements. For a more complete discussion, see “Cash Distribution Policy.”

Notwithstanding the foregoing, the declaration and payment of any distributions will be at the sole discretion of our general partner, which may change our distribution policy at any time. Our general partner will take into account general economic and business conditions, our strategic plans and prospects, our business and investment opportunities, our financial condition and operating results, working capital requirements and anticipated cash needs, contractual restrictions and obligations, legal, tax and regulatory restrictions, other constraints on the payment of distributions by us to our common unitholders or by our subsidiaries to us, and such other factors as our general partner may deem relevant.

The Carlyle Group L.P. is a holding partnership and has no material assets other than its ownership of partnership units in Carlyle Holdings held through wholly-owned subsidiaries. We intend to cause Carlyle Holdings to make distributions to its partners, including the wholly-owned subsidiaries of The Carlyle Group L.P., in order to fund any distributions we may declare on the common units. If Carlyle Holdings makes such distributions, the limited partners of Carlyle Holdings will be entitled to receive equivalent distributions pro rata based on their partnership interests in Carlyle Holdings. Because Carlyle Holdings I GP Inc. must pay taxes and make payments under the tax receivable agreement, the amounts ultimately distributed by The Carlyle Group L.P. to common unitholders are expected to be less, on a per unit basis, than the amounts distributed by the Carlyle Holdings partnerships to the limited partners of the Carlyle Holdings partnerships in respect of their Carlyle Holdings partnership units.

In addition, the partnership agreements of the Carlyle Holdings partnerships provide for cash distributions, which we refer to as “tax distributions,” to the partners of such partnerships if our wholly-owned subsidiaries that are the general partners of the Carlyle Holdings partnerships determine that the taxable income of the relevant partnership will give rise to taxable income for its partners. Generally, these tax distributions will be computed based on our estimate of the net taxable income of the relevant partnership allocable to a partner multiplied by an assumed tax rate equal to the highest effective marginal combined U.S. federal, state and local income tax rate prescribed for an individual or corporate resident in New York, New York (taking into account the non-deductibility of certain expenses and the character of our income). The Carlyle Holdings partnerships will make tax distributions only to the extent

distributions from such partnerships for the relevant year were otherwise insufficient to cover such tax liabilities. The Carlyle Group L.P. is not required to distribute to its common unitholders any of the cash that its wholly-owned subsidiaries may receive as a result of tax distributions by the Carlyle Holdings partnerships. For additional information, including limitations on our ability to make distributions, see “Cash Distribution Policy.”

Exchange rights of holders of Carlyle Holdings partnership units

We have entered into an exchange agreement with the limited partners of the Carlyle Holdings partnerships, including certain of our directors and executive officers, so that these holders, subject to the vesting and minimum retained ownership requirements and transfer restrictions set forth in the partnership agreements of the Carlyle Holdings partnerships, may on a quarterly basis (subject to the terms of the exchange agreement), exchange their Carlyle Holdings partnership units for The Carlyle Group L.P. common units on a one-for-one basis, subject to customary conversion rate adjustments for splits, unit distributions and reclassifications. In addition, subject to certain requirements, Mubadala has been generally permitted to exchange Carlyle Holdings partnerships units for common units following the first anniversary of the closing of the IPO. A Carlyle Holdings limited partner must exchange one partnership unit in each of the three Carlyle Holdings partnerships to effect an exchange for a common unit. As the number of Carlyle Holdings partnership units held by the limited partners of the Carlyle Holdings partnerships declines, the number of votes to which TCG Carlyle Global Partners L.L.C. is entitled as a result of its ownership of the special voting unit will be correspondingly reduced.

Tax receivable agreement

Exchanges of Carlyle Holdings partnership units for our common units that are executed by the limited partners of the Carlyle Holdings partnerships and dispositions of Carlyle Holdings partnership units by such limited partners of the Carlyle Holdings partnerships to us or our wholly-owned subsidiaries, such as those to be effected in connection with this offering as described in “Use of Proceeds,” result in transfers of and increases in the tax basis of the tangible and intangible assets of Carlyle Holdings, primarily attributable to a portion of the goodwill inherent in our business. These transfers and increases in tax basis will increase (for tax purposes) depreciation and amortization deductions and therefore reduce the amount of tax that certain of our subsidiaries, including Carlyle Holdings I GP Inc., which we refer to as the “corporate taxpayers,” would otherwise be required to pay in the future. This increase in tax basis may also decrease gain (or increase loss) on future dispositions of certain capital assets to the extent tax basis is allocated to those capital assets. We have entered into a tax receivable agreement with the limited partners of the Carlyle Holdings partnerships whereby the corporate taxpayers have agreed to pay to such holders 85% of the amount of cash tax savings, if any, in U.S. federal, state and local income tax or foreign or franchise tax that they realize as a result of these increases

in tax basis and, in limited cases, transfers or prior increases in tax basis. The corporate taxpayers expect to benefit from the remaining 15% of cash tax savings, if any, in income tax they realize. Payments under the tax receivable agreement will be based on the tax reporting positions that we will determine. The corporate taxpayers will not be reimbursed for any payments previously made under the tax receivable agreement if a tax basis increase is successfully challenged by the Internal Revenue Service. The corporate taxpayers have the right to terminate the tax receivable agreement by making payments to such holders calculated by reference to the value of all future payments that such holders would have been entitled to receive under the tax receivable agreement using certain valuation assumptions, including that the corporate taxpayers will have sufficient taxable income to fully utilize the deductions arising from the increased tax deductions and tax basis and other benefits related to entering into the tax receivable agreement and that any Carlyle Holdings partnership units that have not been exchanged are deemed exchanged for the market value of the common units at the time of termination.

We expect to record a deferred tax asset of approximately \$55.6 million (or approximately \$68.9 million if the underwriters exercise in full their option to purchase additional common units), for the estimated income tax effects (based on certain assumptions and enacted federal and state tax rates at the date of the transaction) of the increase in the tax basis that we anticipate will result from our use of the portion of the net proceeds of this offering to purchase outstanding Carlyle Holdings partnership units from the holders thereof. To the extent we estimate that we will not realize the full benefit represented by the deferred tax asset, based on an analysis of expected future earnings, we will reduce the deferred tax asset with a valuation allowance. We will record 85% of the estimated realizable tax benefit (which is the recorded deferred tax asset less any recorded valuation allowance) as an increase to the liability due to such selling holders of Carlyle Holdings partnership units, including certain of our directors and executive officers, under the tax receivable agreement, and the remaining 15% of the estimated realizable tax benefit will initially be recorded as an increase to partners' capital. See Note 2 to our consolidated financial statements appearing in the Annual Report, which is incorporated by reference in this prospectus.

Risk factors

See "Risk Factors" for a discussion of risks you should carefully consider before deciding to invest in our common units.

NASDAQ Global Select Market trading symbol

"CG."

In this prospectus, unless otherwise indicated, the number of common units outstanding and the other information based thereon does not reflect:

- 1,800,000 common units issuable upon exercise of the underwriters' option to purchase additional common units from us;
- 254,518,742 common units issuable upon exchange of 254,518,742 Carlyle Holdings partnership units (or, if the underwriters exercise in full their option to purchase additional common units from us, 252,718,742 common units issuable upon exchange of 252,718,742 Carlyle Holdings partnership units) that will be held by the limited partners of Carlyle Holdings immediately following this offering;
- interests that may be granted under The Carlyle Group L.P. 2012 Equity Incentive Plan, or our "Equity Incentive Plan," consisting of:
 - 21,514,850 deferred restricted common units of The Carlyle Group L.P. to our employees and advisors and to directors who are not employees of or advisors to Carlyle;
 - 220,169 phantom deferred restricted common units granted to our employees; and
 - 25,627,965 additional common units or Carlyle Holdings partnership units available for issuance in connection with grants that may be made in the future under our Equity Incentive Plan, which are subject to automatic annual increases; or
- common units that may be issued in connection with, or issuable upon exchange of Carlyle Holdings partnership units that may be issued in connection with, certain acquisitions and strategic investments as described in Note 3 and Note 6 to our consolidated financial statements included in our Annual Report, which is incorporated by reference into this prospectus.

Summary Financial and Other Data

The following summary financial and other data should be read together with "Selected Financial Data," "Management's Discussion and Analysis of Financial Condition and Results of Operations" and the historical financial statements and related notes included in our Annual Report, which is incorporated by reference in this prospectus.

The summary historical consolidated statement of operations data for the years ended December 31, 2013, 2012 and 2011 have been derived from the audited consolidated financial statements of The Carlyle Group L.P. which are included in the Annual Report, which is incorporated by reference in this prospectus. For periods prior to May 2012, the historical consolidated statement of operations data was comprised of the historical combined and consolidated statements of operations data of Carlyle Group, which comprises the combined results of TC Group, L.L.C., TC Group Cayman L.P., TC Group Investment Holdings, L.P. and TC Group Cayman Investment Holdings, L.P., as well as their consolidated subsidiaries. Carlyle Group is considered our predecessor for accounting purposes.

For periods prior to our IPO, net income was determined in accordance with U.S. GAAP for partnerships and was not comparable to net income of a corporation. All distributions and compensation for services rendered by our senior Carlyle professionals were reflected as distributions from equity rather than compensation expense for periods prior to our IPO. Our non-GAAP presentation of Economic Net Income and Distributable Earnings reflects, among other adjustments, pro forma compensation expense for compensation to our senior Carlyle professionals, which prior to our IPO in May 2012 was accounted for as distributions from equity rather than as employee compensation. See "Management's Discussion and Analysis of Financial Condition and Results of Operation—Key Financial Measures—Non-GAAP Financial Measures" included in the Annual Report, which is incorporated by reference in this prospectus.

The following summary financial and other data is not indicative of the expected future operating results of The Carlyle Group L.P.

(Dollars in millions, except unit and per unit data)

	Year Ended December 31,		
	2013	2012	2011
Statement of Operations Data			
Revenues			
Fund management fees	\$ 984.6	\$ 977.6	\$ 915.5
Performance fees			
Realized	1,176.7	907.5	1,307.4
Unrealized	1,198.6	133.6	(185.8)
Total performance fees	2,375.3	1,041.1	1,121.6
Investment income	18.8	36.4	78.4
Interest and other income	11.9	14.5	15.8
Interest and other income of Consolidated Funds	1,043.1	903.5	714.0
Revenue of a consolidated real estate VIE	7.5	—	—
Total revenues	4,441.2	2,973.1	2,845.3
Expenses			
Compensation and benefits			
Base compensation	738.0	624.5	374.5
Equity-based compensation	322.4	201.7	—
Performance fee related			
Realized	539.2	285.5	225.7
Unrealized	644.5	32.2	(122.3)
Total compensation and benefits	2,244.1	1,143.9	477.9
General, administrative and other expenses	496.4	357.5	323.5
Interest	45.5	24.6	60.6
Interest and other expenses of Consolidated Funds	890.6	758.1	453.1
Interest and other expenses of a consolidated real estate VIE	33.8	—	—
Other non-operating (income) expenses	(16.5)	7.1	32.0
Total expenses	3,693.9	2,291.2	1,347.1
Other income (loss)			
Net investment gains (losses) of Consolidated Funds	696.7	1,758.0	(323.3)
Gain on business acquisition	—	—	7.9
Income before provision for income taxes	1,444.0	2,439.9	1,182.8
Provision for income taxes	96.2	40.4	28.5
Net income	1,347.8	2,399.5	1,154.3
Net income (loss) attributable to non-controlling interests in consolidated entities	676.0	1,756.7	(202.6)
Net income attributable to Carlyle Holdings	671.8	642.8	\$ 1,356.9
Net income attributable to non-controlling interests in Carlyle Holdings	567.7	622.5	
Net income attributable to The Carlyle Group L.P.	\$ 104.1	\$ 20.3	
Net income attributable to The Carlyle Group L.P. per common unit			
Basic	\$ 2.24	\$ 0.48	
Diluted	\$ 2.05	\$ 0.41	
Weighted-average common units			
Basic	46,135,229	42,562,928	
Diluted	278,250,489	259,698,987	
Other Data			
Economic Net Income(1)(2)	\$ 1,320.1	\$ 735.6	\$ 833.1
Distributable Earnings(1)(3)	\$ 840.0	\$ 689.7	\$ 864.4
Fee-earning Assets Under Management (at period end)	\$ 139,948.8	\$ 123,121.5	\$ 111,024.6
Total Assets Under Management (at period end)	\$ 188,810.4	\$ 170,156.0	\$ 146,968.6

- (1) Under U.S. GAAP, we are required to consolidate certain of the investment funds that we advise. However, for segment reporting purposes, we present revenues and expenses on a basis that deconsolidates these investment funds.
- (2) Economic net income, or "ENI," a non-GAAP measure, represents segment net income excluding the impact of income taxes, acquisition-related items including amortization of acquired intangibles and contingent consideration taking the form of earn-outs, charges associated with equity-based compensation grants issued in May 2012 upon completion of the IPO or grants issued in acquisitions or strategic investments, corporate actions and infrequently occurring or unusual events. ENI is presented on a basis that deconsolidates the Consolidated Funds. ENI also reflects compensation expense for our senior Carlyle professionals, which for periods prior to our IPO in May 2012, was accounted for as distributions from equity under U.S. GAAP rather than as employee compensation. For a discussion about the purposes for which our management uses ENI and the reasons why we believe our presentation of ENI provides useful information to investors regarding our results of operations as well as a reconciliation of Economic Net Income to Income Before Provision for Income Taxes, see "Management's Discussion and Analysis of Financial Condition and Results of Operations—Key Financial Measures—Non-GAAP Financial Measures—Economic Net Income" and "—Non-GAAP Financial Measures" and Note 18 to our consolidated financial statements appearing in the Annual Report, which is incorporated by reference in this prospectus.
- (3) Distributable Earnings, a non-GAAP measure, is a component of ENI representing total ENI less unrealized performance fees, unrealized investment income, the corresponding unrealized performance fee compensation expense and excludes equity-based compensation. For a discussion about the purposes for which our management uses Distributable Earnings and the reasons why we believe our presentation of Distributable Earnings provides useful information to investors regarding our results of operations as well as a reconciliation of Distributable Earnings to Income Before Provision for Income Taxes, see "Management's Discussion and Analysis of Financial Condition and Results of Operations—Key Financial Measures—Non-GAAP Financial Measures—Distributable Earnings" and "—Non-GAAP Financial Measures" and Note 18 to our consolidated financial statements appearing in the Annual Report, which is incorporated by reference in this prospectus.

RISK FACTORS

When investing in our common units you should carefully consider each of the risks described in the section entitled “Risk Factors” in our Annual Report, as such factors may be updated from time to time in our periodic filings with the SEC, which are incorporated by reference in this prospectus and which are accessible on the SEC’s website at www.sec.gov, and all of the other information included or incorporated by reference in this prospectus.

FORWARD-LOOKING STATEMENTS

This prospectus may contain or incorporate by reference forward-looking statements within the meaning of Section 27A of the Securities Act of 1933 and Section 21E of the Securities Exchange Act of 1934, which reflect our current views with respect to, among other things, our operations and financial performance. You can identify these forward-looking statements by the use of words such as “outlook,” “believe,” “expect,” “potential,” “continue,” “may,” “will,” “should,” “seek,” “approximately,” “predict,” “intend,” “plan,” “estimate,” “anticipate” or the negative version of these words or other comparable words. Such forward-looking statements are subject to various risks and uncertainties. Accordingly, there are or will be important factors that could cause actual outcomes or results to differ materially from those indicated in these statements. We believe these factors include, but are not limited to, those described in the section entitled “Risk Factors” in our Annual Report, which is incorporated by reference in this prospectus, as such factors may be updated from time to time in our periodic filings with the SEC, which are accessible on the SEC’s website at www.sec.gov. These factors should not be construed as exhaustive and should be read in conjunction with the other cautionary statements that are included in this report and in our other periodic filings. We undertake no obligation to publicly update or review any forward-looking statement, whether as a result of new information, future developments or otherwise, except as required by law.

USE OF PROCEEDS

We estimate that the net proceeds to us from the sale of the 12,000,000 common units we are offering will be approximately \$390.8 million, and after deducting underwriting discounts and commissions and the estimated offering expenses payable by us. If the underwriters exercise in full their option to purchase additional common units, we estimate the net proceeds to us will be approximately \$449.5 million.

We intend to use the net proceeds from our issuance and sale of 4,500,000 common units (approximately \$146.1 million) for general corporate purposes, investments in our funds as well as including investment capital for acquisitions of new fund platforms and strategies or other growth initiatives, to drive innovation across the broader Carlyle platform.

We intend to use the net proceeds from our issuance and sale of 7,500,000 common units (approximately \$244.7 million), or 9,300,000 common units (approximately \$303.4 million) if the underwriters exercise in full their option to purchase additional common units, to purchase from certain holders, including certain of our directors and executive officers, an equivalent number of outstanding Carlyle Holdings partnership units. The issuance of common units described in this paragraph will not have an impact on the number of outstanding common units on a “fully-exchanged” basis (i.e. the number of common units that would be outstanding if all vested and unvested Carlyle Holdings partnership units, other than those held by The Carlyle Group L.P. and/or its wholly-owned subsidiaries, were exchanged for newly-issued common units on a one-for-one basis).

Of the approximately \$244.7 million of net proceeds of this offering that will ultimately be paid to selling holders of Carlyle Holdings partnership units, we expect that approximately \$39.6 million will be paid to William E. Conway, Jr., a founder and co-Chief Executive Officer and member of the board of directors of our general partner for 1,215,000 Carlyle Holdings partnership units (or \$48.9 million for 1,500,000 Carlyle Holdings partnership units if the underwriters exercise in full their option to purchase additional common units), approximately \$39.6 million will be paid to Daniel A. D’Aniello, a founder and Chairman and member of the board of directors of our general partner, and his personal planning vehicles for 1,215,000 Carlyle Holdings partnership units (or \$48.9 million for 1,500,000 Carlyle Holdings partnership units if the underwriters exercise in full their option to purchase additional common units), approximately \$1.3 million will be paid to Edward J. Mathias, a Managing Director and member of the board of directors of our general partner for 39,172 Carlyle Holdings partnership units (or \$1.6 million for 49,060 Carlyle Holdings partnership units if the underwriters exercise in full their option to purchase additional common units) and approximately \$1.5 million will be paid to Jeffrey W. Ferguson, our General Counsel for 46,275 Carlyle Holdings partnership units (or \$1.9 million for 57,955 Carlyle Holdings partnership units if the underwriters exercise in full their option to purchase additional common units).

Following this offering, Messrs. Conway and D’Aniello, together with David M. Rubenstein, a founder and co-Chief Executive Officer, will continue to be the largest individual owners of our firm. Immediately following this offering Mr. Conway will continue to own 45,784,644 Carlyle Holdings partnership units, representing a 14.5% ownership interest in our company and more than 97% of the Carlyle Holdings partnership units he originally received at the time of our IPO (or 45,499,644 Carlyle Holdings partnership units, representing a 14.4% ownership interest in our company and more than 96% of his original holdings, if the underwriters exercise in full their option to purchase additional common units) and Mr. D’Aniello and his personal planning vehicles will continue to own 45,784,644 Carlyle Holdings partnership units, representing a 14.5% ownership interest in our company and more than 97% of the Carlyle Holdings partnership units he originally received at the time of our IPO (or 45,499,644 Carlyle Holdings partnership units, representing a 14.4% ownership interest in our company and more than 96% of his original holdings, if the underwriters exercise in full their option to purchase additional common units).

Our senior Carlyle professionals invest significant amounts of their own capital in and alongside the funds that we manage. Messrs. Conway and D’Aniello had unfunded commitments to our investment funds totaling \$474.5 million, as of the end of 2013, or more than five times the proceeds that they will collectively indirectly receive in connection with this offering, or more than four times the proceeds, if the underwriters exercise in full their option to purchase additional common units. As of the end of 2013, the other professionals who are selling Carlyle Holdings partnership units to us or our wholly-owned subsidiaries in connection with this offering had unfunded commitments to our investment funds totaling \$401.0 million, or more than 2.5 times the proceeds that such persons will collectively indirectly receive in connection with this offering, or two times the proceeds, if the underwriters exercise in full their option to purchase additional common units.

PRICE RANGE OF COMMON UNITS

The following table sets forth the high and low sales prices per unit of our common units, for the periods indicated:

	<u>High</u>	<u>Low</u>
2012		
Second Quarter(1)	\$22.45	\$20.00
Third Quarter	\$27.90	\$22.40
Fourth Quarter	\$26.92	\$24.52
2013		
First Quarter	\$37.89	\$26.11
Second Quarter	\$33.47	\$23.85
Third Quarter	\$29.12	\$24.66
Fourth Quarter	\$36.71	\$25.48
2014		
First Quarter(2)	\$39.38	\$32.11

(1) Represents the high and low sales price for the period from May 3, 2012, the date our common units began trading, through June 30, 2012.

(2) Represents the high and low sales price for the period from January 1, 2014, through March 3, 2014.

CASH DISTRIBUTION POLICY

We currently anticipate that we will cause Carlyle Holdings to make quarterly distributions to its partners, including The Carlyle Group L.P.'s wholly owned subsidiaries, that will enable The Carlyle Group L.P. to pay a quarterly distribution of \$0.16 per common unit for each of the first three quarters of each year and for the fourth quarter of each year, to pay a distribution of at least \$0.16 per common unit that, taken together with the prior quarterly distributions in respect of that year, represents its share, net of taxes and amounts payable under the tax receivable agreement, of Carlyle's Distributable Earnings in excess of the amount determined by Carlyle's general partner to be necessary or appropriate to provide for the conduct of Carlyle's business, to make appropriate investments in its business and its funds or to comply with applicable law or any of its financing agreements. We anticipate that the aggregate amount of our distributions for most years will be less than our Distributable Earnings for that year due to these funding requirements.

Notwithstanding the foregoing, the declaration and payment of any distributions will be at the sole discretion of our general partner, which may change our distribution policy at any time. Our general partner will take into account general economic and business conditions, our strategic plans and prospects, our business and investment opportunities, our financial condition and operating results, working capital requirements and anticipated cash needs, contractual restrictions and obligations, legal, tax and regulatory restrictions, other constraints on the payment of distributions by us to our common unitholders or by our subsidiaries to us, and such other factors as our general partner may deem relevant.

Because The Carlyle Group L.P. is a holding partnership and has no material assets other than its ownership of partnership units in Carlyle Holdings held through wholly-owned subsidiaries, we will fund distributions by The Carlyle Group L.P., if any, in three steps:

- first, we will cause Carlyle Holdings to make distributions to its partners, including The Carlyle Group L.P.'s wholly-owned subsidiaries. If Carlyle Holdings makes such distributions, the limited partners of Carlyle Holdings will be entitled to receive equivalent distributions pro rata based on their partnership interests in Carlyle Holdings;
- second, we will cause The Carlyle Group L.P.'s wholly-owned subsidiaries to distribute to The Carlyle Group L.P. their share of such distributions, net of taxes and amounts payable under the tax receivable agreement by such wholly-owned subsidiaries; and
- third, The Carlyle Group L.P. will distribute its net share of such distributions to our common unitholders on a pro rata basis.

Because our wholly-owned subsidiaries must pay taxes and make payments under the tax receivable agreement, the amounts ultimately distributed by us to our common unitholders are expected to be less, on a per unit basis, than the amounts distributed by the Carlyle Holdings partnerships to the other limited partners of the Carlyle Holdings partnerships in respect of their Carlyle Holdings partnership units.

In addition, the partnership agreements of the Carlyle Holdings partnerships will provide for cash distributions, which we refer to as "tax distributions," to the partners of such partnerships if the wholly-owned subsidiaries of The Carlyle Group L.P. which are the general partners of the Carlyle Holdings partnerships determine that the taxable income of the relevant partnership will give rise to taxable income for its partners. Generally, these tax distributions will be computed based on our estimate of the net taxable income of the relevant partnership allocable to a partner multiplied by an assumed tax rate equal to the highest effective marginal combined U.S. federal, state and local income tax rate prescribed for an individual or corporate resident in New York, New York (taking into account the non-deductibility of certain expenses and the character of our income). The Carlyle Holdings partnerships will make tax distributions only to the extent distributions from such partnerships for the relevant year were otherwise insufficient to cover such tax liabilities. The Carlyle Group L.P. is not required to distribute to its common unitholders any of the cash that its wholly-owned subsidiaries may receive as a result of tax distributions by the Carlyle Holdings partnerships.

Under the Delaware Limited Partnership Act, we may not make a distribution to a partner if after the distribution all our liabilities, other than liabilities to partners on account of their partnership interests and liabilities for which the recourse of creditors is limited to specific property of the partnership, would exceed the fair value of our assets. If we were to make such an impermissible distribution, any limited partner who received a distribution and knew at the time of the distribution that the distribution was in violation of the Delaware Limited Partnership Act would be liable to us for the amount of the distribution for three years. In addition, the terms of our credit facility provide certain limits on our ability to make distributions.

Please see “Management’s Discussion and Analysis of Financial Condition and Results of Operation—Liquidity and Capital Resources,” appearing in the Annual Report, which is incorporated by reference in this prospectus for additional information regarding distributions to our common unitholders and the limited partners of Carlyle Holdings.

CONFLICTS OF INTEREST AND FIDUCIARY RESPONSIBILITIES

Conflicts of Interest

Conflicts of interest exist and may arise in the future as a result of the relationships between our general partner or its affiliates (including each party's respective owners) on the one hand, and our partnership, its subsidiaries or our limited partners, on the other hand.

Whenever a potential conflict arises between our general partner or its affiliates or associates, on the one hand, and us, our subsidiaries or any other partner, on the other hand, our general partner will resolve that conflict. Our partnership agreement contains provisions that eliminate the fiduciary duties that otherwise would be owed by our general partner to our common unitholders and the partnership at law or in equity. Accordingly, our general partner is only subject to the contractual duties set forth in our partnership agreement and to the implied contractual covenant of good faith and fair dealing. Our partnership agreement also limits the liability of our general partner and restricts the remedies available to common unitholders for actions taken that without those limitations might constitute breaches of duty (including fiduciary duties).

Under our partnership agreement, our general partner will not be in breach of its obligations under the partnership agreement or its duties to us or our common unitholders if the resolution of the conflict is:

- approved by the conflicts committee, although our general partner is not obligated to seek such approval;
- approved by the vote of a majority of the voting power of our voting units, excluding any voting units owned by our general partner and any of its affiliates, although our general partner is not obligated to seek such approval; or
- approved by our general partner in good faith as determined under the partnership agreement.

Our general partner may, but is not required to, seek the approval of such resolution from the conflicts committee or the holders of our voting units. If our general partner does not seek approval from the conflicts committee or the holders of our voting units, any resolution or course of action taken by it with respect to the conflict of interest shall be conclusively deemed approved by us and our partners and not a breach of our partnership agreement or any duty (including any fiduciary duties) unless our general partner subjectively believes that the resolution or course of action is opposed to the best interests of the partnership. In any proceeding brought by or on behalf of any limited partner or us or any other person bound by the partnership agreement, the person bringing or prosecuting such proceeding will have the burden of providing that the general partner subjectively believed that such resolution or course of action was opposed to the best interests of the partnership. Unless the resolution of a conflict is specifically provided for in our partnership agreement, our general partner or the conflicts committee may consider any factors it determines in good faith to consider when resolving a conflict.

The three bullet points above establish the procedures by which conflict of interest situations are to be resolved pursuant to our partnership agreement. These procedures benefit our general partner by providing our general partner with significant flexibility with respect to its ability to make decisions and pursue actions involving conflicts of interest. Given the significant flexibility afforded our general partner to resolve conflicts of interest—including that our general partner has the right to determine not to seek the approval of the common unitholders with respect to the resolution of such conflicts—the general partner may resolve conflicts of interest pursuant to the partnership agreement in a manner that common unitholders may not believe to be in their or in our best interests. Neither our common unitholders nor we will have any recourse against our general partner if our general partner satisfies one of the standards described in the three bullet points above.

In addition to the provisions relating to conflicts of interest, our partnership agreement contains provisions that waive or consent to conduct by our general partner and its affiliates that might otherwise raise issues about compliance with fiduciary duties or other applicable law. For example, our partnership agreement provides that

when our general partner, in its capacity as our general partner, is permitted to or required to make a decision in its “sole discretion” or “discretion” or pursuant to any provision of our partnership agreement not subject to an express standard of “good faith,” then our general partner will not be subject to any fiduciary duty and will be entitled to consider only such interests and factors as it desires, including its own interests, and will have no duty or obligation (fiduciary or otherwise) to give any consideration to any interest of or factors affecting us or any limited partners and will not be subject to any different standards imposed by the partnership agreement or otherwise existing at law, in equity or otherwise. These modifications of fiduciary duties are expressly permitted by Delaware law. Hence, we and our common unitholders will only have recourse and be able to seek remedies against our general partner if our general partner breaches its obligations pursuant to our partnership agreement. Unless our general partner breaches its obligations pursuant to our partnership agreement, we and our common unitholders will not have any recourse against our general partner even if our general partner were to act in a manner that was inconsistent with traditional fiduciary duties. Furthermore, even if there has been a breach of the obligations set forth in our partnership agreement, our partnership agreement provides that our general partner and its officers and directors will not be liable to us or our common unitholders for errors of judgment or for any acts or omissions unless there has been a final and non-appealable judgment by a court of competent jurisdiction determining that the general partner or its officers and directors acted in bad faith or engaged in fraud or willful misconduct. These modifications are detrimental to the common unitholders because they restrict the remedies available to common unitholders for actions that without those limitations might constitute breaches of duty (including fiduciary duty).

Potential Conflicts

Conflicts of interest could arise in the situations described below, among others.

Actions taken by our general partner may affect the amount of cash flow from operations to our common unitholders.

The amount of cash that is available for distribution to our common unitholders is affected by decisions of our general partner regarding such matters as:

- the amount and timing of cash expenditures, including those relating to compensation;
- the amount and timing of investments and dispositions;
- levels of indebtedness;
- tax matters;
- levels of reserves; and
- issuances of additional partnership securities.

In addition, borrowings by our partnership and our affiliates do not constitute a breach of any duty owed by our general partner to our common unitholders. Our partnership agreement provides that we and our subsidiaries may borrow funds from our general partner and its affiliates on terms agreed to by our general partner in good faith. Under our partnership agreement, those borrowings conclusively will be deemed to be in good faith and not a breach of our partnership agreement or any duty of the general partner if: (1) they are approved by the conflicts committee of our general partner or by the vote of a majority of the voting power of our voting units, excluding any voting units held by our general partner or any of its affiliates, in accordance with the terms of the partnership agreement or (2) they are otherwise approved by our general partner in good faith as determined under the partnership agreement account the totality of the relationships between the parties involved (including other transactions that may be or have been particularly favorable or advantageous to us).

We reimburse our general partner and its affiliates for expenses.

We reimburse our general partner and its affiliates for all costs incurred in managing and operating us, and our partnership agreement provides that our general partner will determine the expenses that are allocable to us.

Our general partner has historically limited, and intends to continue to limit, its liability regarding our obligations.

Our general partner has historically limited, and intends to continue to limit, its liability under contractual arrangements so that the other party has recourse only to our assets, and not against our general partner, its assets or its owners. Our partnership agreement provides that any action taken by our general partner to limit its liability or our liability is not a breach of our general partner's fiduciary duties, even if we could have obtained more favorable terms without the limitation on liability. The limitation on our general partner's liability does not constitute a waiver of compliance with U.S. federal securities laws that would be void under Section 14 of the Securities Act.

Our common unitholders have no right to enforce obligations of our general partner and its affiliates under agreements with us.

Any agreements between us on the one hand, and our general partner and its affiliates on the other, will not grant to the common unitholders, separate and apart from us, the right to enforce the obligations of our general partner and its affiliates in our favor.

Contracts between us, on the one hand, and our general partner and its affiliates, on the other, will not be the result of arm's-length negotiations.

Our partnership agreement allows our general partner to determine in its sole discretion any amounts to reimburse itself or its affiliates for any costs or expenses incurred in connection with our activities. Our general partner may also enter into additional contractual arrangements with any of its affiliates on our behalf. Neither the partnership agreement nor any of the other agreements, contracts and arrangements between us on the one hand, and our general partner and its affiliates on the other, are or will be the result of arm's-length negotiations. Our general partner will determine the terms of any of these transactions entered into on terms that it agrees to in good faith as determined under our partnership agreement. Our general partner and its affiliates will have no obligation to permit us to use any facilities or assets of our general partner and its affiliates, except as may be provided in contracts entered into specifically dealing with that use. There will not be any obligation of our general partner and its affiliates to enter into any contracts of this kind.

Our common units are subject to our general partner's limited call right.

Our general partner may exercise its right to call and purchase common units as provided in our partnership agreement or assign this right to one of its affiliates or to us. Our general partner may use its own discretion, free of fiduciary duty restrictions, in determining whether to exercise this right. As a result, a common unitholder may have his common units purchased from him at an undesirable time or price. See "Material Provisions of The Carlyle Group L.P. Partnership Agreement—Limited Call Right."

We may choose not to retain separate counsel for ourselves or for the holders of common units.

Attorneys, independent accountants and others who will perform services for us are selected by our general partner or the conflicts committee, and may perform services for our general partner and its affiliates. We are not required to retain separate counsel for ourselves or the holders of our common units in the event of a conflict of interest between our general partner and its affiliates on the one hand, and us or the holders of our common units on the other.

Our general partner's affiliates may compete with us.

The partnership agreement provides that our general partner is restricted from engaging in any business activities other than activities incidental to its ownership of interests in us. The partnership agreement does not prohibit affiliates of the general partner, including its owners, from engaging in other business or activities, including those that might compete directly with us.

Certain of our subsidiaries have obligations to investors in our investment funds and may have obligations to other third parties that may conflict with your interests.

Our subsidiaries that serve as the general partners of our investment funds have certain duties and obligations to those funds and their investors and some of our subsidiaries may have contractual duties to other third parties. As a result, we expect to regularly take actions with respect to the allocation of investments among our investment funds (including funds that have different fee structures), the purchase or sale of investments in our investment funds, the structuring of investment transactions for those funds, the advice we provide or otherwise in a manner consistent with such duties and obligations. In addition, directors and officers of our general partner, our senior Carlyle professionals, operating executives and other professionals have made personal investments in and alongside a variety of our investment funds, which may result in conflicts of interest among investors in our funds or our common unitholders regarding investment decisions for these funds. Some of these actions might at the same time adversely affect our near-term results of operations or cash flow.

U.S. federal income tax considerations of our partners may conflict with your interests.

Because our partners hold their Carlyle Holdings partnership units directly or through entities that are not subject to corporate income taxation and The Carlyle Group L.P. holds Carlyle Holdings partnership units through wholly-owned subsidiaries, at least one of which is subject to taxation as a corporation in the United States, conflicts may arise between our partners and The Carlyle Group L.P. relating to the selection and structuring of investments or other matters. Our limited partners will be deemed to expressly acknowledge that our general partner is under no obligation to consider the separate interests of our limited partners (including among other things the tax consequences to limited partners) in deciding whether to cause us to take (or decline to take) any actions.

Fiduciary Duties

Duties owed to common unitholders by our general partner are prescribed by law and our partnership agreement. The Delaware Limited Partnership Act provides that Delaware limited partnerships may in their partnership agreements expand, restrict or eliminate the duties (including fiduciary duties) otherwise owed by a general partner to limited partners and the partnership.

Our partnership agreement contains provisions that eliminate the fiduciary duties that otherwise would be owed by our general partner to our common unitholders and the partnership at law or in equity. Accordingly, our general partner is only subject to the contractual duties set forth in our partnership agreement and to the implied contractual covenant of good faith and fair dealing. We have adopted these modifications to allow our general partner and its affiliates to engage in transactions with us that might otherwise be prohibited by state-law fiduciary duty standards and to take into account the interests of other parties in addition to our interests and the interests of the common unitholders when resolving conflicts of interest. Without these modifications, the general partner's ability to make decisions involving conflicts of interest would be restricted. These modifications are detrimental to the common unitholders because they restrict the remedies available to common unitholders for actions that without those limitations might constitute breaches of duty (including a fiduciary duty), as described below, and they permit our general partner to take into account its own interests and the interests of third parties in addition to our interests and the interests of the common unitholders when resolving conflicts of interest.

The following is a summary of the duties owed by our general partner to the limited partners under our partnership agreement as compared to the default fiduciary duty standards that otherwise would be owed by our general partner to the limited partners at law or in equity:

State Law Fiduciary Duty Standards

Fiduciary duties are generally considered to include an obligation to act in good faith and with due care and loyalty. In the absence of a provision in a partnership agreement providing otherwise, the duty of care would generally require a general partner to inform itself prior to making a business decision of all material information reasonably available to it. In the absence of a provision in a partnership agreement providing otherwise, the duty of loyalty would generally prohibit a general partner of a Delaware limited partnership from taking any action or engaging in any transaction that is not fair to and in the best interests of the partnership where a conflict of interest is present.

Partnership Agreement Modified Standards

General. Our partnership agreement contains provisions that waive duties of or consent to conduct by our general partner and its affiliates that might otherwise raise issues about compliance with fiduciary duties or applicable law. For example, our partnership agreement provides that when our general partner, in its capacity as our general partner, is permitted to or required to make a decision in its “sole discretion” or “pursuant to any provision of our partnership agreement not subject to an express standard of “good faith” then our general partner will not be subject to any fiduciary duty and will be entitled to consider only such interests and factors as it desires, including its own interests, and will have no duty or obligation (fiduciary or otherwise) to give any consideration to any factors affecting us or any limited partners, including our common unitholders, and will not be subject to any different standards imposed by the partnership agreement or otherwise existing of law, in equity or otherwise. In addition, when our general partner is acting in its individual capacity, as opposed to in its capacity as our general partner, it may act without any fiduciary obligation to us or the common unitholders whatsoever. These standards reduce the obligations to which our general partner would otherwise be held.

In addition to the other more specific provisions limiting the obligations of our general partner, our partnership agreement further provides that our general partner and its officers and directors will not be liable to us, our limited partners, including our common unitholders, or assignees for errors of judgment or for any acts or omissions unless there has been a final and non-appealable judgment by a court of competent jurisdiction determining that our general partner or its officers and directors acted in bad faith or engaged in fraud or willful misconduct.

Special Provisions Regarding Affiliated Transactions. Our partnership agreement generally provides that affiliated transactions and resolutions of conflicts of interest not approved by a vote of holders of voting units (excluding voting units owned by the general partner and its affiliates) and that are not approved by the conflicts committee of the board of directors of our general partner will conclusively be deemed approved by the partnership and all partners, and will not constitute a breach of our partnership agreement or of any duty (including any fiduciary duty) existing at law, in equity or otherwise, unless our general Partner subjectively believes that the resolution or course of action in respect of such conflict of interest is opposed to the best interests of the partnership.

In any proceeding brought by or on behalf of any limited partner, including our common unitholders, or our partnership or any other person bound by our partnership agreement, the person bringing or prosecuting such proceeding will have the burden of proving that the general Partner subjectively believed that such resolution or course of action was opposed to the best interests of the partnership. These standards reduce the obligations to which our general partner would otherwise be held.

Rights and Remedies of Common Unitholders Restricted by Modified Standards

The Delaware Limited Partnership Act generally provides that a limited partner may institute legal action on behalf of the partnership to recover damages from a third-party where a general partner has refused to institute the action or where an effort to cause a general partner to do so is not likely to succeed. In addition, the statutory or case law of some jurisdictions may permit a limited partner to institute legal action on behalf of himself and all other similarly situated limited partners to recover damages from a general partner for violations of its fiduciary duties to the limited partners.

By holding our common units, each common unitholder automatically agrees to be bound by the provisions in our partnership agreement, including the provisions discussed above. This is in accordance with the policy of the Delaware Limited Partnership Act favoring the principle of freedom of contract and the enforceability of partnership agreements. The failure of a common unitholder to sign our partnership agreement does not render our partnership agreement unenforceable against that person.

We have agreed to indemnify our general partner, any departing general partner, any person who is or was a tax matters partner, officer or director of our general partner or any departing general partner, any officer or directors of our general partner or any departing general partner who is or was serving at the request of our general partner as an officer, director, employee, member, partner, tax matters partner, agent, fiduciary or trustee of another person, any person who is named in the registration statement of which this prospectus forms a part as being or about to become a director of our general partner, or any person designated by our general partner, against any and all losses, claims, damages, liabilities, joint or several, expenses (including legal fees and expenses), judgments, fines, penalties, interest, settlements or other amounts incurred by our general partner or these other persons on an after tax basis. We have agreed to provide this indemnification unless there has been a

final and non-appealable judgment by a court of competent jurisdiction determining that these persons acted in bad faith or engaged in fraud or willful misconduct. We have also agreed to provide this indemnification for criminal proceedings. Thus, our general partner could be indemnified for its negligent acts if it met the requirements set forth above. To the extent these provisions purport to include indemnification for liabilities arising under the Securities Act, in the opinion of the SEC such indemnification is contrary to public policy and therefore unenforceable. See “Material Provisions of The Carlyle Group L.P. Partnership Agreement—Indemnification.”

DESCRIPTION OF COMMON UNITS

Common Units

Our common units represent limited partner interests in The Carlyle Group L.P. The holders of our common units are entitled to participate in our distributions and exercise the rights or privileges available to limited partners under our partnership agreement. For a description of the relative rights and preferences of holders of our common units in and to our distributions, see “Cash Distribution Policy.” For a description of the rights and privileges of limited partners under our partnership agreement, including voting rights, see “Material Provisions of The Carlyle Group L.P. Partnership Agreement.”

Unless our general partner determines otherwise, we will issue all our common units in uncertificated form.

Transfer of Common Units

By acceptance of the transfer of our common units in accordance with our partnership agreement, each transferee of our common units will be admitted as a common unitholder with respect to the common units transferred when such transfer and admission is reflected in our books and records. Additionally, each transferee of our common units:

- represents that the transferee has the capacity, power and authority to enter into our partnership agreement;
- will become bound by the terms of, and will be deemed to have agreed to be bound by, our partnership agreement;
- gives the consents, approvals, acknowledgements and waivers set forth in our partnership agreement, such as the approval of all transactions and agreements that we are entering into in connection with our formation.

A transferee will become a substituted limited partner of our partnership for the transferred common units automatically upon the recording of the transfer on our books and records. Our general partner will cause any transfers to be recorded on our books and records no less frequently than quarterly.

Common units are securities and are transferable according to the laws governing transfers of securities. In addition to other rights acquired upon transfer, the transferor gives the transferee the right to become a substituted limited partner in our partnership for the transferred common units.

Until a common unit has been transferred on our books, we and the transfer agent, notwithstanding any notice to the contrary, may treat the record holder of the common unit as the absolute owner for all purposes, except as otherwise required by law or stock exchange regulations. A beneficial holder’s rights are limited solely to those that it has against the record holder as a result of any agreement between the beneficial owner and the record holder.

Transfer Agent and Registrar

American Stock Transfer & Trust Company is the registrar and transfer agent for our common units. You may contact the registrar and transfer agent at 6201 15th Avenue, Brooklyn, NY 11219.

**MATERIAL PROVISIONS OF THE CARLYLE GROUP L.P.
PARTNERSHIP AGREEMENT**

The following is a summary of the material provisions of the Amended and Restated Agreement of Limited Partnership of The Carlyle Group L.P. The Amended and Restated Agreement of Limited Partnership of The Carlyle Group L.P. is filed as an exhibit to the registration statement of which this prospectus forms a part, and is referred to in this prospectus as our partnership agreement. The following summary is qualified in its entirety by reference thereto.

General Partner

Our general partner, Carlyle Group Management L.L.C., manages all of our operations and activities. Our general partner is authorized in general to perform all acts that it determines to be necessary or appropriate to carry out our purposes and to conduct our business. Our partnership agreement contains provisions that reduce or eliminate duties (including fiduciary duties) of our general partner and limit remedies available to common unitholders for actions that might otherwise constitute a breach of duty. See “Conflicts of Interest and Fiduciary Responsibilities.” Carlyle Group Management L.L.C. is wholly-owned by our senior Carlyle professionals. Our common unitholders have only limited voting rights on matters affecting our business and therefore have limited ability to influence management’s decisions regarding our business. The voting rights of our common unitholders are limited as set forth in our partnership agreement and in the Delaware Limited Partnership Act. For example, our general partner may generally make amendments to our partnership agreement or certificate of limited partnership without the approval of any common unitholder as set forth under “—Amendment of the Partnership Agreement—No Limited Partner Approval.”

Organization

We were formed on July 18, 2011 and will continue until cancellation of our certificate of limited partnership as provided in the Delaware Limited Partnership Act.

Purpose

Under our partnership agreement we are permitted to engage, directly or indirectly, in any business activity that is approved by our general partner in its sole discretion and that lawfully may be conducted by a limited partnership organized pursuant to the Delaware Limited Partnership Act.

Power of Attorney

Each limited partner, and each person who acquires a limited partner interest in accordance with our partnership agreement, grants to our general partner and, if appointed, a liquidator, a power of attorney to, among other things, execute and file documents required for our qualification, continuance, dissolution or termination. The power of attorney also grants our general partner the authority to amend, and to make consents and waivers under, our partnership agreement and certificate of limited partnership, in each case in accordance with our partnership agreement.

Capital Contributions

Our common unitholders are not obligated to make additional capital contributions, except as described below under “—Limited Liability.” Our general partner is not obligated to make any capital contributions.

Limited Liability

Assuming that a limited partner does not participate in the control of our business within the meaning of the Delaware Limited Partnership Act and that he, she or it otherwise acts in conformity with the provisions of our partnership agreement, his, her or its liability under the Delaware Limited Partnership Act will be limited, subject

to possible exceptions, to the amount of capital he, she or it is obligated to contribute to us for his, her or its common units, plus his, her or its share of any undistributed profits and assets, plus his, her or its obligation to make other payments that is provided for in our partnership agreement. If it were determined however that the right, or exercise of the right, by the limited partners as a group:

- to elect the directors of our general partner in limited circumstances,
- to approve some amendments to our partnership agreement, or
- to take other action under our partnership agreement,

constituted “participation in the control” of our business for the purposes of the Delaware Limited Partnership Act, then our limited partners could be held personally liable for our obligations under the laws of Delaware to the same extent as our general partner. This liability would extend to persons who transact business with us who reasonably believe that the limited partner is a general partner. Neither our partnership agreement nor the Delaware Limited Partnership Act specifically provides for legal recourse against our general partner if a limited partner were to lose limited liability through any fault of our general partner. While this does not mean that a limited partner could not seek legal recourse, we know of no precedent for this type of a claim in Delaware case law. The limitation on our general partner’s liability does not constitute a waiver of compliance with U.S. federal securities laws that would be void under Section 14 of the Securities Act.

Under the Delaware Limited Partnership Act, a limited partnership may not make a distribution to a partner if, after the distribution, all liabilities of the limited partnership, other than liabilities to partners on account of their partnership interests and liabilities for which the recourse of creditors is limited to specific property of the partnership, would exceed the fair value of the assets of the limited partnership. For the purpose of determining the fair value of the assets of a limited partnership, the Delaware Limited Partnership Act provides that the fair value of property subject to liability for which recourse of creditors is limited will be included in the assets of the limited partnership only to the extent that the fair value of that property exceeds the non-recourse liability. The Delaware Limited Partnership Act provides that a limited partner who receives a distribution and knew at the time of the distribution that the distribution was in violation of the Delaware Limited Partnership Act will be liable to the limited partnership for the amount of the distribution for three years from the date of the distribution. Under the Delaware Limited Partnership Act, a substituted limited partner of a limited partnership is liable for the obligations of his assignor to make contributions to the partnership, except that such person is not obligated for liabilities unknown to him at the time he became a limited partner and that could not be ascertained from the partnership agreement.

Moreover, if it were determined that we were conducting business in any state without compliance with the applicable limited partnership statute, or that the right or exercise of the right by the limited partners as a group to elect the directors of our general partner, to approve some amendments to our partnership agreement or to take other action under our partnership agreement constituted “participation in the control” of our business for purposes of the statutes of any relevant jurisdiction, then the limited partners could be held personally liable for our obligations under the law of that jurisdiction to the same extent as our general partner under the circumstances. We intend to operate in a manner that our general partner considers reasonable and necessary or appropriate to preserve the limited liability of the limited partners.

Issuance of Additional Securities

Our partnership agreement authorizes us to issue an unlimited number of additional partnership securities and options, rights, warrants and appreciation rights relating to partnership securities for the consideration and on the terms and conditions established by our general partner in its sole discretion without the approval of any limited partners.

In accordance with the Delaware Limited Partnership Act and the provisions of our partnership agreement, we may also issue additional partnership interests that have designations, preferences, rights, powers and duties that are different from, and may be senior to, those applicable to the common units.

Distributions

Distributions will be made to the partners pro rata according to the percentages of their respective partnership interests. See “Market for Registrant’s Common Equity, Related Stockholder Matters and Issuer Purchases of Equity Securities—Cash Distribution Policy” in our Annual Report, which is incorporated by reference in this prospectus.

Amendment of the Partnership Agreement

General

Amendments to our partnership agreement may be proposed only by our general partner. To adopt a proposed amendment, other than the amendments that require the approval of each limited partner affected or that do not require limited partner approval, each as discussed below, our general partner must seek approval of the holders of a majority of our outstanding voting units, unless a greater or lesser percentage is required under our partnership agreement, in order to approve the amendment or call a meeting of the limited partners to consider and vote upon the proposed amendment. See “—Meetings; Voting.”

Prohibited Amendments

No amendment may be made that would:

- (1) enlarge the obligations of any limited partner without its consent, unless such enlargement may be deemed to have occurred as a result of any amendment that would have a material adverse effect on the rights or preferences of any class of partnership interests in relation to other classes of partnership interests that has been approved by the holders of not less than a majority of the outstanding partnership interests of the class affected; or
- (2) enlarge the obligations of, restrict in any way any action by or rights of, or reduce in any way the amounts distributable, reimbursable or otherwise payable by us to our general partner or any of its affiliates without the consent of our general partner, which may be given or withheld in its sole discretion.

No Limited Partner Approval

Our general partner may generally make amendments to our partnership agreement or certificate of limited partnership without the approval of any limited partner to reflect:

- (1) a change in the name of the partnership, the location of the partnership’s principal place of business, the partnership’s registered agent or its registered office;
- (2) the admission, substitution, withdrawal or removal of partners in accordance with our partnership agreement;
- (3) a change that our general partner determines in its sole discretion is necessary or appropriate for the partnership to qualify or to continue our qualification as a limited partnership or a partnership in which the limited partners have limited liability under the laws of any state or other jurisdiction or to ensure that the partnership will not be treated as an association taxable as a corporation or otherwise taxed as an entity for U.S. federal income tax purposes;
- (4) a change that our general partner determines in its sole discretion to be necessary or appropriate to address certain changes in U.S. federal, state or local income tax regulations, legislation or interpretation;
- (5) an amendment that is necessary, in the opinion of our counsel, to prevent the partnership or our general partner or its directors, officers, employees, agents or trustees, from having a material risk of being in any manner subjected to registration under the provisions of the 1940 Act, the Advisers Act or “plan asset” regulations adopted under the U.S. Employee Retirement Income Security Act of 1974, whether or not substantially similar to plan asset regulations currently applied or proposed by the U.S. Department of Labor;

(6) an amendment that our general partner determines in its sole discretion to be necessary or appropriate in connection with the creation, authorization or issuance of any class or series of partnership securities or options, rights, warrants or appreciation rights relating to partnership securities;

(7) any amendment expressly permitted in our partnership agreement to be made by our general partner acting alone;

(8) an amendment effected, necessitated or contemplated by an agreement of merger, consolidation or other business combination agreement that has been approved under the terms of our partnership agreement;

(9) any amendment that in the sole discretion of our general partner is necessary or appropriate to reflect and account for the formation by the partnership of, or its investment in, any corporation, partnership, joint venture, limited liability company or other entity;

(10) a change in our fiscal year or taxable year and related changes;

(11) a merger with or conversion or conveyance to another limited liability entity that is newly formed and has no assets, liabilities or operations at the time of the merger, conversion or conveyance other than those it receives by way of the merger, conversion or conveyance or those arising out of its incorporation or formation;

(12) an amendment effected, necessitated or contemplated by an amendment to any partnership agreement of the Carlyle Holdings partnerships that requires unitholders of any Carlyle Holdings partnership to provide a statement, certification or other proof of evidence to the Carlyle Holdings partnerships regarding whether such unitholder is subject to U.S. federal income taxation on the income generated by the Carlyle Holdings partnerships;

(13) any amendment to the forum selection provisions of the partnership agreement that the general partner determines in good faith;

(14) any amendment that the general partner determines to be necessary or appropriate to cure any ambiguity, omission, mistake, defect or inconsistency; or

(15) any other amendments substantially similar to any of the matters described in (1) through (14) above.

In addition, our general partner may make amendments to our partnership agreement without the approval of any limited partner if those amendments, in the discretion of our general partner:

(1) do not adversely affect our limited partners considered as a whole (or adversely affect any particular class of partnership interests as compared to another class of partnership interests, except under clause (6) above) in any material respect; provided, however, for purposes of determining whether an amendment satisfies the requirements in this clause (1), our general partner may disregard any adverse effect on any class or classes of partnership interests that have approved such amendment by the holders of not less than a majority of the outstanding partnership interests of the class so affected;

(2) are necessary or appropriate to satisfy any requirements, conditions or guidelines contained in any opinion, directive, order, ruling or regulation of any federal, state, local or non-U.S. agency or judicial authority or contained in any federal, state, local or non-U.S. statute (including the Delaware Limited Partnership Act);

(3) are necessary or appropriate to facilitate the trading of limited partner interests or to comply with any rule, regulation, guideline or requirement of any securities exchange on which the limited partner interests are or will be listed for trading;

(4) are necessary or appropriate for any action taken by our general partner relating to splits or combinations of units under the provisions of our partnership agreement; or

(5) are required to effect the intent expressed in the registration statement of which this prospectus forms a part or the intent of the provisions of our partnership agreement or are otherwise contemplated by our partnership agreement.

Opinion of Counsel and Limited Partner Approval

Our general partner will not be required to obtain an opinion of counsel that an amendment will not result in a loss of limited liability to the limited partners if one of the amendments described above under “—No Limited Partner Approval” should occur. No other amendments to our partnership agreement (other than an amendment pursuant to a merger, sale or other disposition of assets effected in accordance with the provisions described under “—Merger, Sale or Other Disposition of Assets” or an amendment described in the following paragraphs) will become effective without the approval of holders of at least 90% of the outstanding voting units, unless we obtain an opinion of counsel to the effect that the amendment will not affect the limited liability of any of our limited partners under the Delaware Limited Partnership Act.

Except for amendments that may be adopted solely by our general partner or pursuant to a merger, any amendment that would have a material adverse effect on the rights or preferences of any class of partnership interests in relation to other classes of partnership interests will also require the approval of the holders of not less than a majority of the outstanding partnership interests of the class so affected. Unless our general partner determines otherwise in its sole discretion, only our voting units will be treated as a separate class of partnership interest for this purpose.

In addition, any amendment that reduces the voting percentage required to take any action under our partnership agreement must be approved by the written consent or the affirmative vote of limited partners whose aggregate outstanding voting units constitute not less than the voting or consent requirement sought to be reduced.

Merger, Sale or Other Disposition of Assets

Our partnership agreement provides that our general partner in its sole discretion may not, without the approval of the holders of at least a majority of the voting power of the outstanding voting units, cause us to, among other things, sell or exchange all or substantially all of our assets in a single transaction or a series of related transactions, or approve the sale, exchange or other disposition of all or substantially all of the assets of our subsidiaries; provided, however our general partner in its sole discretion may mortgage, pledge, hypothecate or grant a security interest in any or all of our assets (including for the benefit of persons other than us or our subsidiaries), including, in each case, pursuant to any forced sale of any or all of our assets pursuant to the foreclosure or other realization upon those encumbrances without the approval of the limited partners.

Our general partner may, with the approval of the holders of at least a majority of the voting power of the outstanding voting units, cause us to merge or consolidate or otherwise combine with one or more other persons. In addition, if conditions specified in our partnership agreement are satisfied, our general partner may, without limited partner approval, convert or merge us into, or convey some or all of our assets to, a newly formed limited liability entity if (i) the sole purpose of that merger or conveyance is to effect a mere change in our legal form into another limited liability entity, (ii) our general partner receives an opinion of counsel that the merger or conveyance will not result in the loss of limited liability of any limited partner, and (iii) the governing instruments of the new entity provide the limited partners and our general partner with substantially the same rights and obligations as are contained in the partnership agreement. Additionally, our general partner may, without limited partner approval, cause our subsidiaries to merge or consolidate or otherwise combine with one or more other persons. The common unitholders are not entitled to dissenters’ rights of appraisal under our partnership agreement or the Delaware Limited Partnership Act in the event of a merger or consolidation, a sale of substantially all of our assets or any other similar transaction or event.

Election to be Treated as a Corporation

If our general partner, in its sole discretion, determines that it is no longer in our interests to continue as a partnership for U.S. federal income tax purposes, our general partner may elect to treat our partnership (or any of our subsidiaries) as an association or as a publicly traded partnership taxable as a corporation for U.S. federal (and applicable state) income tax purposes or may effect such change by merger or conversion or otherwise under applicable law.

Dissolution

We will dissolve upon:

- (1) the election of our general partner to dissolve our partnership, if approved by the holders of a majority of the voting power of the partnership's outstanding voting units;
- (2) there being no limited partners, unless our partnership is continued without dissolution in accordance with the Delaware Limited Partnership Act;
- (3) the entry of a decree of judicial dissolution of our partnership pursuant to the Delaware Limited Partnership Act; or
- (4) the withdrawal of our general partner or any other event that results in its ceasing to be our general partner other than by reason of a transfer by our general partner of all of its general partner interests pursuant to our partnership agreement unless a successor general partner is appointed in accordance with our partnership agreement.

Upon a dissolution under clause (4), the holders of a majority of the voting power of our outstanding voting units may also elect, within specific time limitations, to continue the partnership's business without dissolution on the same terms and conditions described in the partnership agreement by appointing as a successor general partner an individual or entity approved by the holders of a majority of the voting power of the outstanding voting units, subject to the partnership's receipt of an opinion of counsel to the effect that: (1) the action would not result in the loss of limited liability of any limited partner; and (2) neither we nor any of our subsidiaries (excluding those formed or existing as corporations) would be treated as an association taxable as a corporation or otherwise be taxable as an entity for U.S. federal income tax purposes upon the exercise of that right to continue.

Liquidation and Distribution of Proceeds

Upon our dissolution, our general partner shall act, or select in its sole discretion one or more persons to act, as liquidator. Unless we are continued as a limited partnership, the liquidator authorized to wind up our affairs will, acting with all of the powers of our general partner that the liquidator deems necessary or appropriate in its judgment, liquidate our assets and apply the proceeds of the liquidation first, to discharge our liabilities as provided in our partnership agreement and by law, and thereafter, to the partners according to the percentages of their respective partnership interests as of a record date selected by the liquidator. The liquidator may defer liquidation or distribution of our assets for a reasonable period of time or distribute assets to partners in kind if it determines that an immediate sale or distribution of all or some of our assets would be impractical or would cause undue loss to the partners.

Withdrawal or Removal of the General Partner

Except as described below, our general partner has agreed not to withdraw voluntarily as the general partner on or prior to December 31, 2021 without obtaining the approval of the holders of at least a majority of the voting power of the outstanding voting units, excluding voting units held by our general partner and its affiliates, and furnishing an opinion of counsel regarding tax and limited liability matters. After December 31, 2021, our general partner may withdraw as general partner without first obtaining approval of any common unitholder by giving 90 days' advance notice, and that withdrawal will not constitute a violation of our partnership agreement. Notwithstanding the foregoing, our general partner may withdraw at any time without common unitholder approval upon 90 days' advance notice to the limited partners if at least 50% of the outstanding common units are beneficially owned, owned of record or otherwise controlled by one person and its affiliates other than our general partner and its affiliates.

Upon the withdrawal of our general partner under any circumstances, the holders of a majority of the voting power of the partnership's outstanding voting units may elect a successor to that withdrawing general partner.

If a successor is not elected, or is elected but an opinion of counsel regarding limited liability and tax matters cannot be obtained, the partnership will be dissolved, wound up and liquidated, unless within specific time limitations after that withdrawal, the holders of a majority of the voting power of the partnership's outstanding voting units agree in writing to continue our business and to appoint a successor general partner. See "—Dissolution" above.

Our common unitholders have no right to remove or expel, with or without cause, our general partner.

In circumstances where a general partner withdraws and a successor general partner is elected in accordance with our partnership agreement, the departing general partner will have the option to require the successor general partner to purchase the general partner interest of the departing general partner for a cash payment equal to its fair value. This fair value will be determined by agreement between the departing general partner and the successor general partner. If no agreement is reached within 30 days of the effective date of the general partner's departure, an independent investment banking firm or other independent expert, which, in turn, may rely on other experts, selected by the departing general partner and the successor general partner will determine the fair value. If the departing general partner and the successor general partner cannot agree upon an expert within 45 days of the effective date of the general partner's departure, then an expert chosen by agreement of the independent investment banking firms or independent experts selected by each of them will determine the fair value.

If the option described above is not exercised by the departing general partner, the departing general partner's general partner interest will automatically convert into common units pursuant to a valuation of those interests as determined by an investment banking firm or other independent expert selected in the manner described in the preceding paragraph.

In addition, we are required to reimburse the departing general partner for all amounts due the departing general partner, including without limitation all employee-related liabilities, including severance liabilities, incurred for the termination of any employees employed by the departing general partner or its affiliates for the partnership's benefit.

Transfer of General Partner Interests

Except for transfer by our general partner of all, but not less than all, of its general partner interests in the partnership to an affiliate of our general partner, or to another entity as part of the merger or consolidation of our general partner with or into another entity or the transfer by our general partner of all but not less than all, of its assets to another entity, our general partner may not transfer all or any part of its general partner interest in the partnership to another person prior to December 31, 2021 without the approval of the holders of at least a majority of the voting power of the partnership's outstanding voting units, excluding voting units held by our general partner and its affiliates. On or after December 31, 2021, our general partner may transfer all or any part of its general partner interest without first obtaining approval of any common unitholder. As a condition of this transfer, the transferee must assume the rights and duties of the general partner under our partnership agreement and agree to be bound by the provisions of our partnership agreement and furnish to us an opinion of counsel regarding limited liability matters. At any time, the members of our general partner may sell or transfer all or part of their limited liability company interests in our general partner without the approval of the common unitholders.

Limited Call Right

If at any time:

(i) less than 10% of the total limited partner interests of any class then outstanding (other than special voting units), including our common units, are held by persons other than our general partner and its affiliates; or

(ii) the partnership is subjected to registration under the provisions of the 1940 Act, our general partner will have the right, which it may assign in whole or in part to any of its affiliates or to us, exercisable in its sole

discretion, to purchase all, but not less than all, of the remaining limited partner interests of the class held by unaffiliated persons as of a record date to be selected by our general partner, on at least ten but not more than 60 days' notice. The purchase price in the event of this purchase is the greater of:

- (1) the current market price as of the date three days before the date the notice is mailed, and
- (2) the highest cash price paid by our general partner or any of its affiliates acting in concert with us for any limited partner interests of the class purchased within the 90 days preceding the date on which our general partner first mails notice of its election to purchase those limited partner interests.

As a result of our general partner's right to purchase outstanding limited partner interests, a holder of limited partner interests may have his limited partner interests purchased at an undesirable time or price. The U.S. tax consequences to a common unitholder of the exercise of this call right are the same as a sale by that common unitholder of his common units in the market. See "Material U.S. Federal Tax Considerations—Consequences to U.S. Holders of Common Units."

Meetings; Voting

Except as described below regarding a person or group owning 20% or more of The Carlyle Group L.P. common units then outstanding, record holders of common units (other than any person whom our general partner may from time to time with such person's consent designate as a non-voting common unitholder) or of special voting units will be entitled to notice of, and to vote at, meetings of our limited partners and to act upon matters as to which holders of limited partner interests have the right to vote or to act.

Except as described below regarding a person or group owning 20% or more of The Carlyle Group L.P. common units then outstanding, each record holder of a common unit of The Carlyle Group L.P. (other than any person whom our general partner may from time to time with such person's consent designate as a non-voting common unitholder) is entitled to a number of votes equal to the number of common units held of record as of the relevant record date.

In addition, TCG Carlyle Global Partners L.L.C., an entity wholly-owned by our senior Carlyle professionals, will hold a special voting unit that provides it with a number of votes on any matter that may be submitted for a vote of our common unitholders that is equal to the aggregate number of vested and unvested Carlyle Holdings partnership units held by any limited partner of Carlyle Holdings that does not itself hold a special voting unit. A special voting unit held by any holder other than TCG Carlyle Global Partners L.L.C. will provide that holder with a number of votes on any matter that may be submitted for a vote of our common unitholders that is equal to the number of vested and unvested Carlyle Holdings partnership units held by such holder. We refer to our common units (other than those held by any person whom our general partner may from time to time with such person's consent designate as a non-voting common unitholder) and our special voting units as "voting units." Our voting units will be treated as a single class on all such matters submitted for a vote of our common unitholders. If the ratio at which Carlyle Holdings partnership units are exchangeable for our common units changes from one-for-one, the number of votes to which the holders of the special voting units are entitled will be adjusted accordingly. Additional limited partner interests having special voting rights could also be issued. See "—Issuance of Additional Securities" above.

In the case of common units held by our general partner on behalf of non-citizen assignees, our general partner will distribute the votes on those common units in the same ratios as the votes of partners in respect of other limited partner interests are cast.

Our general partner does not anticipate that any meeting of common unitholders will be called in the foreseeable future. Any action that is required or permitted to be taken by the limited partners may be taken either at a meeting of the limited partners or without a meeting, without a vote and without prior notice if consented to in writing or by electronic transmission by limited partners owning not less than the minimum percentage of the voting power of the outstanding limited partner interests that would be necessary to authorize

or take that action at a meeting at which all the limited partners were present and voted. Meetings of the limited partners may be called by our general partner or by limited partners owning at least 50% or more of the voting power of the outstanding limited partner interests of the class or classes for which a meeting is proposed. Common unitholders may vote either in person or by proxy at meetings. The holders of a majority of the voting power of the outstanding limited partner interests of the class or classes for which a meeting has been called, represented in person or by proxy, will constitute a quorum unless any action by the limited partners requires approval by holders of a greater percentage of such limited partner interests, in which case the quorum will be the greater percentage.

However, if at any time any person or group (other than our general partner and its affiliates, or a direct or subsequently approved transferee of our general partner or its affiliates) acquires, in the aggregate, beneficial ownership of 20% or more of any class of The Carlyle Group L.P. common units then outstanding, that person or group will lose voting rights on all of its common units and the common units owned by such person or group may not be voted on any matter and will not be considered to be outstanding when sending notices of a meeting of limited partners, calculating required votes, determining the presence of a quorum or for other similar purposes.

Election of Directors of General Partner

On January 31 of each year (each a "Determination Date"), our general partner will determine whether the total voting power held by (i) holders of the special voting units in The Carlyle Group L.P. (including voting units held by our general partner and its affiliates) in their capacity as such, (ii) then-current or former Carlyle personnel (treating voting units deliverable to such persons pursuant to outstanding equity awards as being held by them), or (iii) any estate, trust, partnership or limited liability company or other similar entity of which any such person is a trustee, partner, member or similar party, respectively, constitutes at least 10% of the voting power of the outstanding voting units of The Carlyle Group L.P., which we refer to as the "Carlyle Partners Ownership Condition."

The method of nomination, election and removal of the members of the board of directors of our general partner shall be determined accordingly as follows: (i) in any year in which our general partner has determined on the applicable Determination Date that the Carlyle Partners Ownership Condition has not been satisfied, the directors shall be elected at an annual meeting of our common unitholders; and (ii) in any year in which our general partner has determined on the applicable Determination Date that the Carlyle Partners Ownership Condition has been satisfied, the board of directors of our general partner will be appointed and removed by its members in accordance with the limited liability company agreement of our general partner and not by our limited partners.

We will hold an annual meeting of our common unitholders for the election of directors in any year in which we do not satisfy the Carlyle Partners Ownership Condition on the applicable Determination Date. At any such annual meeting, the holders of outstanding voting units shall vote together as a single class for the election of directors to the board of directors of our general partner. Our limited partners shall elect by a plurality of the votes cast at such meeting persons to serve as directors who are nominated in accordance with our partnership agreement. If our general partner has provided at least thirty days advance notice of any meeting at which directors are to be elected, then the limited partners holding outstanding voting units that attend such meeting shall constitute a quorum, and if the our general partner has provided less than thirty days advance notice of any such meeting, then limited partners holding a majority of the voting power of our outstanding voting units shall constitute a quorum.

Prior to any annual meeting of our common unitholders for the election of directors held in the next succeeding year following a year in which an annual meeting of our common unitholders for the election of directors was not held (each such annual meeting an "Initial Annual Meeting"), the board of directors of our general partner shall be divided into three classes, Class I, Class II, and Class III, as determined by the then-existing board of directors in its sole discretion. Each Director shall serve for a three-year term; provided,

however, that the directors designated to Class I shall serve for an initial term that expires on the applicable Initial Annual Meeting, the directors designated to Class II shall serve for an initial term that expires on the first annual meeting following the applicable Initial Annual Meeting, and the directors designated to Class III shall serve for an initial term that expires on the second annual meeting following the applicable Initial Annual Meeting. At each succeeding annual meeting of limited partners for the election of Directors following an Initial Annual Meeting, successors to the directors whose term expires at that annual meeting shall be elected for a three-year term. If in any year following an Initial Annual Meeting, our general partner determines on the applicable Determination Date that the Carlyle Partners Ownership Condition has been satisfied, the board of directors of our general partner will be appointed and removed by its members in accordance with the limited liability company agreement of our general partner and not by our limited partners.

Non-Voting Common Unitholders

Any person whom our general partner may from time to time with such person's consent designate as a non-voting common unitholder, will have no voting rights whatsoever with respect to their common units, including any voting rights that may otherwise exist under our partnership agreement, under the Delaware Limited Partnership Act, at law, in equity or otherwise, provided that any amendment to the partnership agreement that would have a material adverse effect on the rights or preferences of our common units beneficially owned by non-voting common unitholders in relation to other common units must be approved by the holders of not less than a majority of the common units beneficially owned by the non-voting common unitholders. However, unaffiliated third party transferees of common units from a non-voting common unitholder will have the same voting rights with respect to such common units as other holders of common units.

Status as Limited Partner

By transfer of common units in accordance with our partnership agreement, each transferee of common units will be admitted as a limited partner with respect to the common units transferred when such transfer and admission is reflected in our books and records. The common units will be fully paid and non-assessable except as such non-assessability may be affected by section 17-607 as described under "—Limited Liability" above, pursuant to Section 17-804 of the Delaware Limited Partnership Act (which relates to the liability of a limited partner who receives a distribution of assets during the winding up of a limited partnership and who knew at the time of such distribution that it was in violation of this provision) or as set forth in the partnership agreement.

Non-Citizen Assignees; Redemption

If the partnership or any subsidiary is or becomes subject to federal, state or local laws or regulations that in the determination of our general partner in its sole discretion create a substantial risk of cancellation or forfeiture of any property in which the partnership or any subsidiary has an interest because of the nationality, citizenship or other related status of any limited partner, we may redeem the common units held by that limited partner at their current market price. To avoid any cancellation or forfeiture, our general partner may require each limited partner to furnish information about his, her or its nationality, citizenship or related status. If a limited partner fails to furnish information about his nationality, citizenship or other related status within 30 days after receipt of a request for the information or our general partner determines, with the advice of counsel, after receipt of the information that the limited partner is not an eligible citizen, the limited partner may be treated as a non-citizen assignee. A non-citizen assignee does not have the right to direct the voting of his, her or its common units and may not receive distributions in kind upon our liquidation but will be entitled to the cash equivalent thereof.

Indemnification

Under our partnership agreement, in most circumstances we will indemnify the following persons, to the fullest extent permitted by law, from and against all losses, claims, damages, liabilities, joint or several, expenses (including legal fees and expenses), judgments, fines, penalties, interest, settlements or other amounts on an after tax basis:

- our general partner;

- any departing general partner;
- any person who is or was a tax matters partner, officer or director of our general partner or any departing general partner;
- any officer or director of our general partner or any departing general partner who is or was serving at the request of our general partner or any departing general partner as an officer,
- director, employee, member, partner, tax matters partner, agent, fiduciary or trustee of another person;
- any person who controls a general partner or departing general partner;
- any person who is named in the registration statement of which this prospectus forms a part as being or about to become a director of our general partner; or
- any person designated by our general partner in its sole discretion.

We have agreed to provide this indemnification unless there has been a final and non-appealable judgment entered by a court of competent jurisdiction determining that these persons acted in bad faith or engaged in fraud or willful misconduct. We have also agreed to provide this indemnification for criminal proceedings. Any indemnification under these provisions will only be out of the partnership's assets. The general partner will not be personally liable for, or have any obligation to contribute or loan funds or assets to the partnership to enable the partnership to effectuate indemnification. The indemnification of the persons described above in the fourth bullet point shall be secondary to any indemnification such person is entitled from another person or the relevant Carlyle fund to the extent applicable. Our partnership agreement provides that each of our limited partners and any other person who acquires an equity interest in the partnership will waive, to the fullest extent permitted by law, any and all rights to seek punitive and certain other damages. We may purchase insurance against liabilities asserted against and expenses incurred by persons for our activities, regardless of whether the partnership would have the power to indemnify the person against liabilities under our partnership agreement.

Forum Selection

Our partnership agreement provides that the partnership, the general partner, each of the limited partners, each person in whose name any interest in the partnership is registered, each other person who acquires an interest in any equity interest in the partnership and each other person who is bound by the partnership agreement (collectively, the "Consenting Parties" and each a "Consenting Party") (1) irrevocably agrees that, unless the general partner shall otherwise agree in writing, any claims, suits, actions or proceedings arising out of or relating in any way to the partnership agreement or any interest in the partnership (including, without limitation, any claims, suits or actions under or to interpret, apply or enforce (A) the provisions of the partnership agreement, including, without limitation, the validity, scope or enforceability of the forum selection provisions thereof, (B) the duties, obligations or liabilities of the partnership to the limited partners or the general partner, or of limited partners or the general partner to the partnership, or among the limited partners and the general partner, (C) the rights or powers of, or restrictions on, the partnership, the limited partners or the general partner, (D) any provision of the Delaware Limited Partnership Act or other similar applicable statutes, (E) any other instrument, document, agreement or certificate contemplated either by any provision of the Delaware Limited Partnership Act relating to the partnership or by our partnership agreement, or (F) the federal securities laws of the United States or the securities or antifraud laws of any international, national, state, provincial, territorial, local or other governmental or regulatory authority, including, in each case, the applicable rules and regulations promulgated thereunder (regardless of whether such Disputes (x) sound in contract, tort, fraud or otherwise, (y) are based on common law, statutory, equitable, legal or other grounds, or (z) are derivative or direct claims)) (a "Dispute"), shall be exclusively brought in the Court of Chancery of the State of Delaware or, if such court does not have subject matter jurisdiction thereof, any other court located in the State of Delaware with subject matter jurisdiction; (2) irrevocably submits to the exclusive jurisdiction of such courts in connection with any such claim, suit, action or proceeding; (3) irrevocably agrees not to, and waives any right to, assert in any such claim, suit, action or proceeding that (A) it is not personally subject to the jurisdiction of such courts or any other court to which proceedings in such courts may be appealed, (B) such claim, suit, action or proceeding is brought in an

inconvenient forum, or (C) the venue of such claim, suit, action or proceeding is improper; (4) expressly waives any requirement for the posting of a bond by a party bringing such claim, suit, action or proceeding; (5) consents to process being served in any such claim, suit, action or proceeding by mailing, certified mail, return receipt requested, a copy thereof to such party at the address in effect for notices under our partnership agreement, and agrees that such service shall constitute good and sufficient service of process and notice thereof; provided, that nothing in clause (5) hereof shall affect or limit any right to serve process in any other manner permitted by law; (6) irrevocably waives any and all right to trial by jury in any such claim, suit, action or proceeding; (7) agrees that proof shall not be required that monetary damages for breach of the provisions of this Agreement would be difficult to calculate and that remedies at law would be inadequate; and (8) agrees that if a Dispute that would be subject to the forum selection provisions of the partnership agreement if brought against a Consenting Party is brought against an employee, officer, director, agent or indemnitee of such Consenting Party or its affiliates (other than Disputes brought by the employer or principal of any such employee, officer, director, agent or indemnitee) for alleged actions or omissions of such employee, officer, director, agent or indemnitee undertaken as an employee, officer, director, agent or indemnitee of such Consenting Party or its affiliates, such employee, officer, director, agent or indemnitee shall be entitled to invoke the forum selection provisions of the partnership agreement.

Books and Reports

Our general partner is required to keep appropriate books of the partnership's business at our principal offices or any other place designated by our general partner. The books will be maintained for both tax and financial reporting purposes on an accrual basis. For tax and financial reporting purposes, our year ends on December 31.

As soon as reasonably practicable after the end of each fiscal year, we will furnish to each partner tax information (including a Schedule K-1), which describes on a U.S. dollar basis such partner's share of our income, gain, loss and deduction for our preceding taxable year. Although we currently intend to distribute Schedule K-1s on or around 90 days after the end of our fiscal year, it may require longer than 90 days after the end of our fiscal year to obtain the requisite information from all lower-tier entities so that Schedule K-1s may be prepared for our partnership. Consequently, holders of common units who are U.S. taxpayers should anticipate that they may need to file annually with the U.S. Internal Revenue Service ("IRS") (and certain states) a request for an extension past April 15 or the otherwise applicable due date of their income tax return for the taxable year. In addition, each partner will be required to report for all tax purposes consistently with the information provided by us. See "Material U.S. Federal Tax Considerations—Administrative Matters—Information Returns."

Right to Inspect Our Books and Records

Our partnership agreement provides that a limited partner can, for a purpose reasonably related to his interest as a limited partner, upon reasonable written demand stating the purpose for such demand and at his own expense, have furnished to him:

- promptly after becoming available, a copy of our U.S. federal income tax returns (excluding for the avoidance of doubt, information that is specific to another partner);
- a current list of the name and last known business, residence or mailing address of each record holder; and
- copies of our partnership agreement, the certificate of limited partnership of the partnership, related amendments and powers of attorney under which they have been executed.

Our general partner may, and intends to, keep confidential from the limited partners trade secrets or other information the disclosure of which our general partner believes is not in our partnership's best interests, could damage our partnership or its business or which the partnership is required by law or by agreements with third parties to keep confidential. In addition, our partnership agreement provides for certain restrictions on the rights of a limited partner to receive information from us for the purpose of determining whether to pursue litigation or assist in pending litigation against us.

MATERIAL U.S. FEDERAL TAX CONSIDERATIONS

This summary discusses the material U.S. federal income tax considerations related to the purchase, ownership and disposition of our common units as of the date hereof. For purposes of this discussion, references to “Carlyle,” “we,” “our,” and “us” mean only The Carlyle Group L.P. and not its subsidiaries, except as otherwise indicated. This summary is based on provisions of the Internal Revenue Code of 1986, as amended, on the regulations promulgated thereunder and on published administrative rulings and pronouncements of the IRS and judicial decisions, all of which are subject to change or differing interpretations at any time, possibly with retroactive effect. This discussion is necessarily general and may not apply to all categories of investors, some of which, such as banks, or other financial institutions, real estate investment trusts, investors who are deemed to own 10% or more of our common units, persons holding common units as part of a hedging, integrated or conversion transaction or straddle, traders in securities that elect to use a mark-to-market method of accounting for their securities holdings, charitable remainder unit trusts, common trust funds, insurance companies, persons liable for the alternative minimum tax, dealers and other investors that do not own their common units as capital assets, may be subject to special rules. Tax-exempt organizations and mutual funds are discussed separately below. In addition, except to the extent provided below, this discussion does not address any aspect of state, local or non-U.S. tax law. The actual tax consequences of the purchase and ownership of common units will vary depending on your circumstances. This discussion, to the extent that it states matters of U.S. federal tax law or legal conclusions and subject to the qualifications herein, represents the opinion of Simpson Thacher & Bartlett LLP. Such opinion is based in part on facts described in this prospectus and on various other factual assumptions, representations and determinations. Any alteration or incorrectness of such facts, assumptions, representations or determinations could adversely affect such opinion. However, opinions of counsel are not binding upon the IRS or any court, and the IRS may challenge the conclusions herein and a court may sustain such a challenge.

For purposes of this discussion, a “U.S. Holder” is a beneficial holder of a common unit that is for U.S. federal income tax purposes (1) an individual citizen or resident of the United States; (2) a corporation (or other entity treated as a corporation for U.S. federal income tax purposes) created or organized in or under the laws of the United States, any state thereof or the District of Columbia; (3) an estate the income of which is subject to U.S. federal income taxation regardless of its source or (4) a trust which either (A) is subject to the primary supervision of a court within the United States and one or more United States persons have the authority to control all substantial decisions of the trust or (B) has a valid election in effect under applicable Treasury regulations to be treated as a United States person. A “non-U.S. Holder” is a holder (other than a partnership) that is not a U.S. Holder.

If a partnership holds common units, the tax treatment of a partner in the partnership generally will depend upon the status of the partner and the activities of the partnership. If you are a partner of a partnership holding our common units, you should consult your tax advisors. This discussion does not constitute tax advice and is not intended to be a substitute for tax planning.

Prospective holders of common units should consult their own tax advisors concerning the U.S. federal, state and local income tax and estate tax consequences in their particular situations of the purchase, ownership and disposition of a common unit, as well as any consequences under the laws of any other taxing jurisdiction.

Taxation of our Partnership and the Carlyle Holdings Partnerships

Subject to the discussion set forth in the next paragraph, an entity that is treated as a partnership for U.S. federal income tax purposes is not a taxable entity and incurs no U.S. federal income tax liability. Instead, each partner is required to take into account its allocable share of items of income, gain, loss and deduction of the partnership in computing its U.S. federal income tax liability, regardless of whether or not cash distributions are then made. Investors in our common units will become limited partners of The Carlyle Group L.P. Distributions of cash by a partnership to a partner are generally not taxable unless the amount of cash distributed to a partner is in excess of the partner’s adjusted basis in its partnership interest.

An entity that would otherwise be classified as a partnership for U.S. federal income tax purposes may nonetheless be taxable as a corporation if it is a “publicly traded partnership,” unless an exception applies. An entity that would otherwise be classified as a partnership is a publicly traded partnership if (i) interests in the partnership are traded on an established securities market or (ii) interests in the partnership are readily tradable on a secondary market or the substantial equivalent thereof. We are publicly traded. However, an exception to taxation as a corporation, referred to as the “Qualifying Income Exception,” exists if at least 90% of such partnership’s gross income for every taxable year consists of “qualifying income” and the partnership is not required to register under the 1940 Act. Qualifying income includes certain interest income, dividends, real property rents, gains from the sale or other disposition of real property, and any gain from the sale or disposition of a capital asset or other property held for the production of income that otherwise constitutes qualifying income. Qualifying income does not generally include fees paid in respect of services.

We expect that allocations of carried interest from investments in stock and securities of corporations will typically consist of qualifying income because such allocations will generally consist of gain from the sale or disposition of a capital asset, interest and dividends. Income in respect of management, advisory and incentive fees as well as income allocations from our interest in investments in businesses conducted in non-corporate form (such as partnerships or LLCs) will typically not constitute qualifying income. We generally hold investments that generate non-qualifying income separately from our investments that generate qualifying income, which include allocations of carried interest from investments in stock and securities of corporations. We generally hold investments that earn non-qualifying fee income such as management fees, incentive fees and advisory fees, through entities classified as corporations for U.S. federal income tax purposes, including Carlyle Holdings I GP Inc. and Carlyle Holdings III GP L.P. Distributions received from such corporations will generally constitute qualifying income.

Our general partner has adopted a set of investment policies and procedures that govern the types of investments we can make (and income we can earn), including structuring certain investments through entities classified as corporations for U.S. federal income tax purposes, to ensure that we will meet the Qualifying Income Exception in each taxable year. It is the opinion of Simpson Thacher & Bartlett LLP that we will be treated as a partnership and not as a corporation for U.S. federal income tax purposes based on certain assumptions and factual statements and representations made by us, including statements and representations as to the manner in which we intend to manage our affairs, the composition of our income, and that our general partner will ensure that we comply with the investment policies and procedures put in place to ensure that we meet the Qualifying Income Exception in each taxable year. However, this opinion is based solely on current law and does not take into account any proposed or potential changes in law, which may be enacted with retroactive effect. Moreover, opinions of counsel are not binding upon the IRS or any court, and the IRS may challenge this conclusion and a court may sustain such a challenge.

If we fail to meet the Qualifying Income Exception, other than a failure that is determined by the IRS to be inadvertent and that is cured within a reasonable time after discovery, or if we are required to register under the 1940 Act, we will be treated as if we had transferred all of our assets, subject to liabilities, to a newly formed corporation, on the first day of the year in which we fail to meet the Qualifying Income Exception, in return for stock in that corporation, and then distributed the stock to the holders of common units in liquidation of their interests in us. This deemed contribution and liquidation should generally be tax-free to holders so long as we do not have liabilities in excess of the tax basis of our assets at that time. Thereafter, we would be treated as a corporation for U.S. federal income tax purposes.

If we were treated as a corporation in any taxable year, either as a result of a failure to meet the Qualifying Income Exception or otherwise, our items of income, gain, loss and deduction would be reflected only on our tax return rather than being passed through to holders of common units, and we would be subject to U.S. corporate income tax on our taxable income at regular corporate rates, thereby materially reducing the amount of cash available for distribution to holders of our common units. Distributions made to holders of our common units would be treated as either taxable dividend income, which may be eligible for reduced rates of taxation, to the

extent of our current or accumulated earnings and profits, or in the absence of earnings and profits, as a nontaxable return of capital, to the extent of the holder's tax basis in the common units, or as taxable capital gain, after the holder's basis is reduced to zero. In addition, in the case of non-U.S. Holders, income that we receive with respect to investments may be subject to a higher rate of U.S. withholding tax. Accordingly, treatment as a corporation could materially reduce a holder's after-tax return and thus could result in a substantial reduction of the value of the common units.

If at the end of any taxable year we fail to meet the Qualifying Income Exception, we may still qualify as a partnership if we are entitled to relief under the Internal Revenue Code for an inadvertent termination of partnership status. This relief will be available if (i) the failure is cured within a reasonable time after discovery, (ii) the failure is determined by the IRS to be inadvertent, and (iii) we agree to make such adjustments (including adjustments with respect to our partners) or to pay such amounts as are required by the IRS. It is not possible to state whether we would be entitled to this relief in any or all circumstances. It also is not clear under the Internal Revenue Code whether this relief is available for our first taxable year as a publicly traded partnership. If this relief provision is inapplicable to a particular set of circumstances involving us, we will not qualify as a partnership for federal income tax purposes. Even if this relief provision applies and we retain our partnership status, we or the holders of our common units (during the failure period) will be required to pay such amounts as are determined by the IRS.

The remainder of this section assumes that we and the Carlyle Holdings partnerships will be treated as partnerships for U.S. federal income tax purposes.

Taxation of Carlyle Holdings I GP Inc.

Carlyle Holdings I GP Inc. is taxable as a corporation for U.S. federal income tax purposes and therefore, as the holder of Carlyle Holdings I GP Inc.'s common stock, we will not be taxed directly on earnings of entities we hold through Carlyle Holdings I GP Inc. Distributions of cash or other property that Carlyle Holdings I GP Inc. pays to us will constitute dividends for U.S. federal income tax purposes to the extent paid from its current or accumulated earnings and profits (as determined under U.S. federal income tax principles). If the amount of a distribution by Carlyle Holdings I GP Inc. exceeds its current and accumulated earnings and profits, such excess will be treated as a tax-free return of capital to the extent of our tax basis in Carlyle Holdings I GP Inc.'s common stock, and thereafter will be treated as a capital gain. We hold certain of our entities that are expected to generate income that is not qualifying income for purposes of the Qualifying Income Exception through Carlyle Holdings I GP Inc., which is a corporation for U.S. federal income tax purposes, so that income in respect of such investments will be paid to us as distributions from Carlyle Holdings I GP Inc. that will constitute qualifying income.

Carlyle Holdings I GP Inc. will incur U.S. federal income taxes on its proportionate share of any net taxable income of Carlyle Holdings I L.P. In accordance with its partnership agreement, we will cause Carlyle Holdings I L.P. to distribute cash on a pro rata basis to holders of its units (that is, Carlyle Holdings I GP Inc. and the limited partners of Carlyle Holdings I L.P.) in an amount at least equal to the maximum tax liabilities arising from their ownership of such units, if any.

Taxation of Carlyle Holdings II GP L.L.C.

As a single member limited liability company that has not elected to be treated as a corporation for U.S. federal income tax purposes, Carlyle Holdings II GP L.L.C. will be treated as an entity disregarded as a separate entity from us. Accordingly, all the assets, liabilities and items of income, deduction and credit of Carlyle Holdings II GP L.L.C. will be treated as our assets, liabilities and items of income, deduction and credit.

Carlyle Holdings II GP L.L.C. invests directly or indirectly in a variety of assets and otherwise engages in activities and derives income that is consistent with the Qualifying Income Exception discussed above.

Taxation of Carlyle Holdings III GP L.P.

Carlyle Holdings III GP L.P. is a wholly-owned société en commandite organized in Québec. Carlyle Holdings III GP L.P. is taxable as a foreign corporation for U.S. federal income tax purposes. Distributions of cash or other property that Carlyle Holdings III GP L.P. pays to us will constitute dividends for U.S. federal income tax purposes to the extent paid from its current or accumulated earnings and profits (as determined under U.S. federal income tax principles). If the amount of a distribution by Carlyle Holdings III GP L.P. exceeds its current and accumulated earnings and profits, such excess will be treated as a tax-free return of capital to the extent of our tax basis in Carlyle Holdings III GP L.P.'s common stock, and thereafter will be treated as a capital gain. Income realized by Carlyle Holdings III GP L.P. will not be subject to U.S. federal income tax to the extent it has a foreign source and is not treated as ECI. Carlyle Holdings III GP L.P. is expected to be operated so as not to produce ECI. Its assets, liabilities and items of income, deduction and credit will not be treated as our assets, liabilities and items of income, deduction and credit. We expect to hold certain of our entities that are expected to generate income that is not qualifying income for purposes of the Qualifying Income Exception through Carlyle Holdings III GP L.P., which is a corporation for U.S. federal income tax purposes, so that income in respect of such entities will be paid to us as distributions from Carlyle Holdings III GP L.P. that will constitute qualifying income.

Personal Holding Companies

Carlyle Holdings I GP Inc. could be subject to additional U.S. federal income tax on a portion of its income if it is determined to be a personal holding company, or "PHC," for U.S. federal income tax purposes. Subject to certain exceptions, a U.S. corporation generally will be classified as a PHC for U.S. federal income tax purposes in a given taxable year if (i) at any time during the last half of such taxable year, five or fewer individuals (without regard to their citizenship or residency and including as individuals for this purpose certain entities such as certain tax-exempt organizations and pension funds) own or are deemed to own (pursuant to certain constructive ownership rules) more than 50% of the stock of the corporation by value and (ii) at least 60% of the corporation's adjusted ordinary gross income, as determined for U.S. federal income tax purposes, for such taxable year consists of PHC income (which includes, among other things, dividends, interest, royalties, annuities and, under certain circumstances, rents). The PHC rules do not apply to non-U.S. corporations.

Due to applicable attribution rules, it is likely that five or fewer individuals or tax-exempt organizations will be treated as owning actually or constructively more than 50% of the value of units in Carlyle Holdings I GP Inc. Consequently, Carlyle Holdings I GP Inc. could be or become a PHC, depending on whether it fails the PHC gross income test. If, as a factual matter, the income of Carlyle Holdings I GP Inc. fails the PHC gross income test, it will be a PHC. Certain aspects of the gross income test cannot be predicted with certainty. Thus, no assurance can be given that Carlyle Holdings I GP Inc. is not or will not in the future become a PHC.

If Carlyle Holdings I GP Inc. is or were to become a PHC in a given taxable year, it would be subject to an additional 20% PHC tax on its undistributed PHC income, which generally includes the company's taxable income, subject to certain adjustments. If Carlyle Holdings I GP Inc. were to become a PHC and had significant amounts of undistributed PHC income, the amount of PHC tax could be material; in that event, distribution of such income would generally reduce the PHC income subject to tax.

Certain State, Local and Non-U.S. Tax Matters

We and our subsidiaries may be subject to state, local or non-U.S. taxation in various jurisdictions, including those in which we or they transact business, own property or reside. For example, we and our subsidiaries may be subject to New York City and/or District of Columbia unincorporated business tax. We may be required to file tax returns in some or all of those jurisdictions. The state, local or non-U.S. tax treatment of us and our common unitholders may not conform to the U.S. federal income tax treatment discussed herein. We will pay non-U.S. taxes, and dispositions of foreign property or operations involving, or investments in, foreign

property may give rise to non-U.S. income or other tax liability in amounts that could be substantial. Any non-U.S. taxes incurred by us may not pass through to common unitholders as a credit against their U.S. federal income tax liability.

Consequences to U.S. Holders of Common Units

The following is a summary of the material U.S. federal income tax consequences that will apply to you if you are a U.S. Holder of common units.

For U.S. federal income tax purposes, your allocable share of our recognized items of income, gain, loss, deduction or credit, and our allocable share of those items of Carlyle Holdings, will be determined by the limited partnership agreements for our partnership and Carlyle Holdings if such allocations have “substantial economic effect” or are determined to be in accordance with your interest in our partnership. We believe that for U.S. federal income tax purposes, such allocations will be given effect as being in accordance with your interest in The Carlyle Group L.P., and our general partner intends to prepare tax returns based on such allocations. If the IRS successfully challenges the allocations made pursuant to the limited partnership agreements, the resulting allocations for U.S. federal income tax purposes might be less favorable than the allocations set forth in the limited partnership agreements.

With respect to U.S. Holders who are individuals, certain dividends paid by a corporation, including certain qualified foreign corporations, to us may be subject to reduced rates of taxation. A qualified foreign corporation includes a foreign corporation that is eligible for the benefits of specified income tax treaties with the United States. In addition, a foreign corporation is treated as a qualified corporation on shares that are readily tradable on an established securities market in the United States. We do not expect that Carlyle Holdings III GP L.P. will be a qualified foreign corporation for purposes of the reduced rates of taxation on dividends. Among other exceptions, a U.S. Holder who is an individual will not be eligible for reduced rates of taxation on any dividend if the payer is a PFIC (as defined below) in the taxable year in which such dividend is paid or in the preceding taxable year or on any income required to be reported by the U.S. Holder as a result of a QEF election (as defined below) that is attributable to a dividend received by an entity that is a PFIC and in which the fund holds a direct or indirect interest. Prospective investors should consult their own tax advisors regarding the application of the foregoing rules to their particular circumstances.

We may derive taxable income from an investment that is not matched by a corresponding distribution of cash. This could occur, for example, if we used cash to make an investment or to reduce debt instead of distributing profits. In addition, special provisions of the Internal Revenue Code may be applicable to certain of our investments, and may affect the timing of our income, requiring us (and, consequently, you) to recognize taxable income before we (or you) receive cash attributable to such income. Accordingly, it is possible that your U.S. federal income tax liability with respect to your allocable share of our income for a particular taxable year could exceed any cash distribution you receive for the year, thus giving rise to an out-of-pocket tax liability for you.

U.S. Holders that are individuals, estates or trusts are subject to a Medicare tax of 3.8% on “net investment income” (or undistributed “net investment income,” in the case of estates and trusts) for each taxable year, with such tax applying to the lesser of such income or the excess of such person’s adjusted gross income (with certain adjustments) over a specified amount. Net investment income includes net income from interest, dividends, annuities, royalties and rents and net gain attributable to the disposition of investment property. It is anticipated that net income and gain attributable to an investment in our common units will be included in a U.S. Holder’s “net investment income” subject to this Medicare tax.

Basis

You will have an initial tax basis for your common unit equal to the amount you paid for the common unit plus your share under the partnership tax rules of our liabilities, if any. That basis will be increased by your share of our income and by increases in your share of our liabilities, if any. That basis will be decreased, but not below zero, by distributions from us, by your share of our losses and by any decrease in your share of our liabilities.

Holders who purchase common units in separate transactions must combine the basis of those units and maintain a single adjusted tax basis for all those units. Upon a sale or other disposition of less than all of the common units, a portion of that tax basis must be allocated to the common units sold.

Limits on Deductions for Losses and Expenses

Your deduction of your share of our losses will be limited to your tax basis in your common units and, if you are an individual or a corporate holder that is subject to the “at risk” rules, to the amount for which you are considered to be “at risk” with respect to our activities, if that is less than your tax basis. In general, you will be at risk to the extent of your tax basis in your common units, reduced by (1) the portion of that basis attributable to your share of our liabilities for which you will not be personally liable and (2) any amount of money you borrow to acquire or hold your common units, if the lender of those borrowed funds owns an interest in us, is related to you or can look only to the common units for repayment. Your at risk amount generally will increase by your allocable share of our income and gain and decrease by cash distributions to you and your allocable share of losses and deductions. You must recapture losses deducted in previous years to the extent that distributions cause your at risk amount to be less than zero at the end of any taxable year. Losses disallowed or recaptured as a result of these limitations will carry forward and will be allowable to the extent that your tax basis or at risk amount, whichever is the limiting factor, subsequently increases. Any excess loss above that gain previously suspended by the at risk or basis limitations may no longer be used.

We do not expect to generate income or losses from “passive activities” for purposes of Section 469 of the Internal Revenue Code. Accordingly, income allocated to you by us may not be offset by your Section 469 passive losses and losses allocated to you generally may not be used to offset your Section 469 passive income. In addition, other provisions of the Internal Revenue Code may limit or disallow any deduction for losses by you or deductions associated with certain assets of the partnership in certain cases, including potentially Section 470 of the Internal Revenue Code. You should consult with your tax advisors regarding their limitations on the deductibility of losses under applicable sections of the Internal Revenue Code.

Limitations on Deductibility of Organizational Expenses and Syndication Fees

In general, neither we nor any U.S. Holder may deduct organizational or syndication expenses. An election may be made by our partnership to amortize organizational expenses over a 15-year period. Syndication fees (which would include any sales or placement fees or commissions or underwriting discount payable to third parties) must be capitalized and cannot be amortized or otherwise deducted.

Limitations on Interest Deductions

Your share of our interest expense is likely to be treated as “investment interest” expense. If you are a non-corporate U.S. Holder, the deductibility of “investment interest” expense is generally limited to the amount of your “net investment income.” Your share of our dividend and interest income will be treated as investment income, although “qualified dividend income” subject to reduced rates of tax in the hands of an individual will only be treated as investment income if you elect to treat such dividend as ordinary income not subject to reduced rates of tax. In addition, state and local tax laws may disallow deductions for your share of our interest expense.

The computation of your investment interest expense will take into account interest on any margin account borrowing or other loan incurred to purchase a common unit. Net investment income includes gross income from property held for investment and amounts treated as portfolio income, such as dividends and interest, under the passive loss rules less deductible expenses, other than interest, directly connected with the production of investment income, but generally does not include gains attributable to the disposition of property held for investment. For this purpose, any long-term capital gain or qualifying dividend income that is taxable at long-term capital gain rates is excluded from net investment income, unless the U.S. holder elects to pay tax on such gain or dividend income at ordinary income rates.

Deductibility of Partnership Investment Expenditures by Individual Partners and by Trusts and Estates

Subject to certain exceptions, all miscellaneous itemized deductions of an individual taxpayer, and certain of such deductions of an estate or trust, are deductible only to the extent that such deductions exceed 2% of the taxpayer's adjusted gross income. Moreover, the otherwise allowable itemized deductions of individuals whose gross income exceeds an applicable threshold amount are subject to reduction by an amount equal to the lesser of (1) 3% of the excess of the individual's adjusted gross income over the threshold amount, or (2) 80% of the amount of the itemized deductions. The operating expenses of Carlyle Holdings, including the management fee and management fees paid with respect to private funds advised by Carlyle to the extent these private funds are treated as partnerships for U.S. federal income tax purposes, may be treated as miscellaneous itemized deductions subject to the foregoing rule. Alternatively, it is possible that we will be required to capitalize the management fees. Accordingly, if you are a non-corporate U.S. Holder, you should consult your tax advisors with respect to the application of these limitations.

Treatment of Distributions

Distributions of cash by us will not be taxable to you to the extent of your adjusted tax basis (described above) in your common units. Any cash distributions in excess of your adjusted tax basis will be considered to be gain from the sale or exchange of common units (described below). Under current laws, such gain would be treated as capital gain and would be long-term capital gain if your holding period for your common units exceeds one year, subject to certain exceptions (described below). A reduction in your allocable share of our liabilities, and certain distributions of marketable securities by us, are treated similar to cash distributions for U.S. federal income tax purposes.

Sale or Exchange of Common Units

You will recognize gain or loss on a sale of common units equal to the difference, if any, between the amount realized and your tax basis in the common units sold. Your amount realized will be measured by the sum of the cash or the fair market value of other property received plus your share under the partnership tax rules of our liabilities, if any. Your adjusted tax basis will be adjusted for this purpose by your allocable share of our income or loss for the year of such sale or other disposition.

Gain or loss recognized by you on the sale or exchange of a common unit generally will be taxable as capital gain or loss and will be long-term capital gain or loss if all of the common units you hold were held for more than one year on the date of such sale or exchange. Assuming we have not made an election, referred to as a "QEF election," to treat our interest in a passive foreign investment company, or "PFIC," as a "qualified electing fund," or "QEF," gain attributable to such investment in a PFIC would be taxable as ordinary income and would be subject to an interest charge. See "—Passive Foreign Investment Companies." In addition, certain gain attributable to our investment in a controlled foreign corporation, or "CFC," may be characterized as ordinary income and certain gain attributable to "unrealized receivables" or "inventory items" would be characterized as ordinary income rather than capital gain. For example, if we hold debt acquired at a market discount, accrued market discount on such debt would be treated as "unrealized receivables." The deductibility of capital losses is subject to limitations.

Holders who purchase units at different times and intend to sell all or a portion of the units within a year of their most recent purchase are urged to consult their tax advisors regarding the application of certain "split holding period" rules to them and the treatment of any gain or loss as long-term or short-term capital gain or loss.

Foreign Tax Credit Limitations

You generally will be entitled to a foreign tax credit with respect to your allocable share of creditable foreign taxes paid on our income and gains. Complex rules may, depending on your particular circumstances,

limit the availability or use of foreign tax credits. Gains from the sale of our investments may be treated as U.S. source gains. Consequently, you may not be able to use the foreign tax credit arising from any foreign taxes imposed on such gains unless such credit can be applied (subject to applicable limitations) against tax due on other income treated as derived from foreign sources. Certain losses that we incur may be treated as foreign source losses, which could reduce the amount of foreign tax credits otherwise available.

Section 754 Election

We have not made and currently do not intend to make the election permitted by Section 754 of the Internal Revenue Code with respect to us or Carlyle Holdings II L.P. Carlyle Holdings I L.P. and Carlyle Holdings III L.P. have made such an election. The election is irrevocable without the consent of the IRS and generally requires the electing partnership to adjust the tax basis in its assets, or “inside basis,” attributable to a transferee of interests in the electing partnership under Section 743(b) of the Internal Revenue Code to reflect the purchase price of such interests paid by the transferee. As a result of Carlyle Holdings I L.P. and Carlyle Holdings III L.P. having made the Section 754 election, Carlyle Holdings I GP Inc. and Carlyle Holdings III GP L.P., respectively, are required to adjust the basis in their assets attributable to interests in Carlyle Holding I L.P. acquired by Carlyle Holdings I GP Inc. and interests in Carlyle Holdings III L.P. acquired by Carlyle Holdings III GP L.P. from the limited partners of Carlyle Holdings I L.P. and Carlyle Holdings III L.P. pursuant to the Exchange Agreement described under “Certain Relationships and Related Person Transactions—Exchange Agreement.” If, as intended, we do not make the Section 754 election with respect to us, no similar adjustment to basis in assets owned directly or indirectly by us attributable to common units acquired by transferees would be made. Because we own our interests in Carlyle Holdings I L.P. indirectly through Carlyle Holdings I GP Inc., a corporation for U.S. federal income tax purposes, and our interests in Carlyle Holdings III L.P. indirectly through Carlyle Holdings III GP L.P., a corporation for U.S. federal income tax purposes, there is no adjustment to the inside basis for a transferee of common units in respect of Carlyle Holdings I L.P. or Carlyle Holdings III L.P. regardless of whether a Section 754 election is made in respect of us or those partnerships.

If no Section 754 election is made by us and Carlyle Holdings II L.P., there will be no adjustment for the transferee of common units, even if the purchase price of those common units is higher than the common units’ share of the aggregate tax basis of our assets or the assets of Carlyle Holdings II L.P. immediately prior to the transfer. In that case, on a sale of any such asset, gain allocable to the transferee would include built-in gain allocable to the transferee at the time of the transfer, which built-in gain would otherwise generally be eliminated if we and Carlyle Holdings II L.P. had made a Section 754 election.

Even assuming no Section 754 election is made, if common units are transferred at a time when we had a “substantial built-in loss” inherent in our assets, we would be obligated to reduce the tax basis in the portion of such assets attributable to such common units.

The calculations under Section 754 of the Internal Revenue Code are complex. We will make them on the basis of assumptions as to the value of our assets and other matters.

Uniformity of Common Units

Because we cannot match transferors and transferees of common units, we have adopted depreciation, amortization and other tax accounting positions that may not conform with all aspects of existing Treasury regulations. A successful IRS challenge to those positions could adversely affect the amount of tax benefits available to our common unitholders. It also could affect the timing of these tax benefits or the amount of gain on the sale of common units and could have a negative impact on the value of our common units or result in audits of and adjustments to our common unitholders’ tax returns.

Foreign Currency Gain or Loss

Our functional currency is the U.S. dollar, and our income or loss is calculated in U.S. dollars. It is likely that we will recognize “foreign currency” gain or loss with respect to transactions involving non-U.S. dollar currencies. In general, foreign currency gain or loss is treated as ordinary income or loss. You should consult your tax advisor with respect to the tax treatment of foreign currency gain or loss.

Passive Foreign Investment Companies

You may be subject to special rules applicable to indirect investments in foreign corporations, including an investment in a PFIC. Carlyle Holdings I GP Inc. will be subject to rules similar to those described below with respect to any PFICs owned directly or indirectly by it.

A PFIC is defined as any foreign corporation with respect to which either (1) 75% or more of the gross income for a taxable year is “passive income” (as defined in Section 1297 of the Internal Revenue Code and the regulations promulgated thereunder) or (2) 50% or more of its assets in any taxable year (generally based on the quarterly average of the value of its assets) produce “passive income.” There are no minimum stock ownership requirements for PFICs. Once a corporation qualifies as a PFIC it is, subject to certain exceptions, always treated as a PFIC, regardless of whether it satisfies either of the qualification tests in subsequent years. Any gain on disposition of stock of a PFIC, as well as income realized on certain “excess distributions” by the PFIC, is treated as though realized ratably over the shorter of your holding period of common units or our holding period for the PFIC. Such gain or income is taxable as ordinary income and, as discussed above, dividends paid by a PFIC to an individual will not be eligible for the reduced rates of taxation that are available for certain qualifying dividends. In addition, an interest charge would be imposed on you based on the tax deferred from prior years.

Although it may not always be possible, we expect to make a QEF election where possible with respect to each entity treated as a PFIC to treat such non-U.S. entity as a QEF in the first year we hold shares in such entity. However, we expect that in many circumstances we may not have access to information necessary to make a QEF election because, for example, one of our investment funds may hold minority interests directly or indirectly in an entity over which we have no control. A QEF election is effective for our taxable year for which the election is made and all subsequent taxable years and may not be revoked without the consent of the IRS. If we make a QEF election under the Internal Revenue Code with respect to our interest in a PFIC, in lieu of the foregoing treatment, we would be required to include in income each year a portion of the ordinary earnings and net capital gains of the QEF called “QEF Inclusions,” even if not distributed to us. Thus, holders may be required to report taxable income as a result of QEF Inclusions without corresponding receipts of cash. However, a holder may elect to defer, until the occurrence of certain events, payment of the U.S. federal income tax attributable to QEF Inclusions for which no current distributions are received, but will be required to pay interest on the deferred tax computed by using the statutory rate of interest applicable to an extension of time for payment of tax. However, net losses (if any) of a non-U.S. entity owned through Carlyle Holdings II GP L.L.C. that is treated as a PFIC will not pass through to us or to holders and may not be carried back or forward in computing such PFIC’s ordinary earnings and net capital gain in other taxable years. Consequently, holders may over time be taxed on amounts that as an economic matter exceed our net profits. Our tax basis in the shares of such non-U.S. entities, and a holder’s basis in our common units, will be increased to reflect QEF Inclusions. No portion of the QEF Inclusion attributable to ordinary income will be eligible for reduced rates of taxation applicable to “qualified dividend income” of individual U.S. Holders. Amounts included as QEF Inclusions with respect to direct and indirect investments generally will not be taxed again when distributed. You should consult your tax advisors as to the manner in which QEF Inclusions affect your allocable share of our income and your basis in your common units.

Alternatively, in the case of a PFIC that is a publicly-traded foreign portfolio company, we may make an election to “mark to market” the stock of such foreign portfolio company on an annual basis. Pursuant to such an election, you would include in each year as ordinary income the excess, if any, of the fair market value of such

stock over its adjusted basis at the end of the taxable year. You may treat as ordinary loss any excess of the adjusted basis of the stock over its fair market value at the end of the year, but only to the extent of the net amount previously included in income as a result of the election in prior years.

When making investment or other decisions, we will consider whether an investment will be a PFIC and the tax consequences related thereto. We may make certain investments, including for instance investments in specialized investment funds or investments in funds of funds through non-U.S. corporate subsidiaries of the Carlyle Holdings partnerships or through other non-U.S. corporations. Such entities may be a PFICs for U.S. federal income tax purposes. In addition, certain of our investments could be in PFICs. Thus, we can make no assurance that some of our investments will not be treated as held through a PFIC or as interests in PFICs or that such PFICs will be eligible for the “mark to market” election, or that as to any such PFICs we will be able to make QEF elections.

If we do not make a QEF election with respect to a PFIC, Section 1291 of the Internal Revenue Code will treat all gain on a disposition by us of shares of such entity, gain on the disposition of common units by a holder at a time when we own shares of such entity, as well as certain other defined “excess distributions,” as if the gain or excess distribution were ordinary income earned ratably over the shorter of the period during which the holder held its common units or the period during which we held our shares in such entity. For gain and excess distributions allocated to prior years, (i) the tax rate will be the highest in effect for that taxable year and (ii) the tax will be payable generally without regard to offsets from deductions, losses and expenses. Holders will also be subject to an interest charge for any deferred tax. No portion of this ordinary income will be eligible for the favorable tax rate applicable to “qualified dividend income” for individual U.S. persons.

Controlled Foreign Corporations

A non-U.S. entity will be treated as a CFC if it is treated as a corporation for U.S. federal income tax purposes and if more than 50% of (i) the total combined voting power of all classes of stock of the non-U.S. entity entitled to vote or (ii) the total value of the stock of the non-U.S. entity is owned by U.S. Shareholders on any day during the taxable year of such non-U.S. entity. For purposes of this discussion, a “U.S. Shareholder” with respect to a non-U.S. entity means a U.S. person that owns 10% or more of the total combined voting power of all classes of stock of the non-U.S. entity entitled to vote.

When making investment or other decisions, we will consider whether an investment will be a CFC and the consequences related thereto. If we are a U.S. Shareholder in a non-U.S. entity that is treated as a CFC, each common unitholder may be required to include in income its allocable share of the CFC’s “Subpart F” income reported by us. Subpart F income generally includes dividends, interest, net gain from the sale or disposition of securities, non-actively managed rents, fees for services provided to certain related persons and certain other generally passive types of income. The aggregate Subpart F income inclusions in any taxable year relating to a particular CFC are limited to such entity’s current earnings and profits. These inclusions are treated as ordinary income (whether or not such inclusions are attributable to net capital gains). Thus, an investor may be required to report as ordinary income its allocable share of the CFC’s Subpart F income reported by us without corresponding receipts of cash and may not benefit from capital gain treatment with respect to the portion of our earnings (if any) attributable to net capital gains of the CFC.

The tax basis of our shares of such non-U.S. entity, and a holder’s tax basis in our common units, will be increased to reflect any required Subpart F income inclusions. Such income will be treated as income from sources within the United States, for certain foreign tax credit purposes, to the extent derived by the CFC from U.S. sources. Such income will not be eligible for the reduced rate of tax applicable to “qualified dividend income” for individual U.S. persons. See “— Consequences to U.S. Holders of Common Units.” Amounts included as such income with respect to direct and indirect investments generally will not be taxable again when distributed.

Regardless of whether any CFC has Subpart F income, any gain allocated to you from our disposition of stock in a CFC will be treated as ordinary income to the extent of your allocable share of the current and/or

accumulated earnings and profits of the CFC. In this regard, earnings would not include any amounts previously taxed pursuant to the CFC rules. However, net losses (if any) of a non-U.S. entity owned by us that is treated as a CFC will not pass through to you. Moreover, a portion of your gain from the sale or exchange of your common units may be treated as ordinary income. Any portion of any gain from the sale or exchange of a common unit that is attributable to a CFC may be treated as an “unrealized receivable” taxable as ordinary income. See “—Sale or Exchange of Common Units.”

If a non-U.S. entity held by us is classified as both a CFC and a PFIC during the time we are a U.S. Shareholder of such non-U.S. entity, a holder will be required to include amounts in income with respect to such non-U.S. entity pursuant to this subheading, and the consequences described under the subheading “Passive Foreign Investment Companies” above will not apply. If our ownership percentage in a non-U.S. entity changes such that we are not a U.S. Shareholder with respect to such non-U.S. entity, then common unitholders may be subject to the PFIC rules. The interaction of these rules is complex, and prospective holders are urged to consult their tax advisors in this regard.

It is expected that Carlyle Holdings III GP L.P. will be a CFC subject to the above rules and as such, each common unitholder that is a U.S. person will be required to include in income its allocable share of Carlyle Holdings III GP L.P.’s Subpart F income reported by us.

Investment Structure

To manage our affairs so as to meet the Qualifying Income Exception for the publicly traded partnership rules (discussed above) and comply with certain requirements in our Limited Partnership Agreement, we may need to structure certain investments through an entity classified as a corporation for U.S. federal income tax purposes. However, because our common unitholders will be located in numerous taxing jurisdictions, no assurances can be given that any such investment structure will be beneficial to all our common unitholders to the same extent, and may even impose additional tax burdens on some of our common unitholders. As discussed above, if the entity were a non-U.S. corporation it may be considered a CFC or a PFIC. If the entity were a U.S. corporation, it would be subject to U.S. federal income tax on its operating income, including any gain recognized on its disposal of its investments. In addition, if the investment involves U.S. real estate, gain recognized on disposition would generally be subject to such tax, whether the corporation is a U.S. or a non-U.S. corporation.

Taxes in Other State, Local and Non-U.S. Jurisdictions

In addition to U.S. federal income tax consequences, you may be subject to potential U.S. state and local taxes because of an investment in us in the U.S. state or locality in which you are a resident for tax purposes or in which we have investments or activities. You may also be subject to tax return filing obligations and income, franchise or other taxes, including withholding taxes, in state, local or non-U.S. jurisdictions in which we invest, or in which entities in which we own interests conduct activities or derive income. Income or gains from investments held by us may be subject to withholding or other taxes in jurisdictions outside the United States, subject to the possibility of reduction under applicable income tax treaties. If you wish to claim the benefit of an applicable income tax treaty, you may be required to submit information to tax authorities in such jurisdictions. You should consult your own tax advisors regarding the U.S. state, local and non-U.S. tax consequences of an investment in us.

Transferor/Transferee Allocations

In general, our taxable income and losses will be determined and apportioned among investors using conventions we regard as consistent with applicable law. As a result, if you transfer your common units, you may be allocated income, gain, loss and deduction realized by us after the date of transfer. Similarly, a transferee may be allocated income, gain, loss and deduction realized by us prior to the date of the transferee’s acquisition of our common units.

Although Section 706 of the Internal Revenue Code generally provides guidelines for allocations of items of partnership income and deductions between transferors and transferees of partnership interests, it is not clear that our allocation method complies with its requirements. If our convention were not permitted, the IRS might contend that our taxable income or losses must be reallocated among the investors. If such a contention were sustained, your respective tax liabilities would be adjusted to your possible detriment. Our general partner is authorized to revise our method of allocation between transferors and transferees (as well as among investors whose interests otherwise vary during a taxable period).

U.S. Federal Estate Taxes

If common units are included in the gross estate of a U.S. citizen or resident for U.S. federal estate tax purposes, then a U.S. federal estate tax might be payable in connection with the death of such person. Prospective individual U.S. Holders should consult their own tax advisors concerning the potential U.S. federal estate tax consequences with respect to our common units.

U.S. Taxation of Tax-Exempt U.S. Holders of Common Units

A holder of common units that is a tax-exempt entity for U.S. federal income tax purposes (including an individual retirement account or 401(k) plan participant) and therefore generally exempt from U.S. federal income taxation, may nevertheless be subject to tax on any unrelated business taxable income, or “UBTI,” to the extent, if any, that its allocable share of our income consists of UBTI. A tax-exempt partner of a partnership that regularly engages in a trade or business which is unrelated to the exempt function of the tax-exempt partner must include in computing its UBTI its pro rata share (whether or not distributed) of such partnership’s gross income derived from such unrelated trade or business. Moreover, a tax-exempt partner of a partnership could be treated as earning UBTI to the extent that such partnership derives income from “debt-financed property,” or if the partnership interest itself is debt financed. Debt-financed property means property held to produce income with respect to which there is “acquisition indebtedness” (that is, indebtedness incurred in acquiring or holding property).

While we do not expect to generate significant amounts of UBTI for tax-exempt U.S. Holders of our common units as a result of direct investments in operating businesses, certain of our investments may be treated as debt-financed investments, which may give rise to debt-financed UBTI. Accordingly, no assurance can be given that we will not generate UBTI currently or in the future and, subject to the qualifying income rules described under “Material U.S. Federal Tax Considerations—Taxation of our Partnership and the Carlyle Holdings Partnerships,” we are under no obligation to minimize UBTI. Tax-exempt U.S. Holders of common units should consult with their own tax advisors regarding all aspects of UBTI.

Investments by U.S. Mutual Funds

U.S. mutual funds that are treated as regulated investment companies, or “RICs,” for U.S. federal income tax purposes are required, among other things, to meet an annual 90% gross income and a quarterly 50% asset value test under Section 851(b) of the Internal Revenue Code to maintain their favorable U.S. federal income tax status. The treatment of an investment by a RIC in common units for purposes of these tests will depend on whether we are treated as a “qualifying publicly traded partnership.” If our partnership is so treated, then the common units themselves are the relevant assets for purposes of the 50% asset value test and the net income from the common units is the relevant gross income for purposes of the 90% gross income test. RICs may not invest greater than 25% of their assets in one or more qualifying publicly traded partnerships. All income derived from a qualifying publicly traded partnership is considered qualifying income for purposes of the RIC 90% gross income test above. However, if we are not treated as a qualifying publicly traded partnership for purposes of the RIC rules, then the relevant assets for the RIC asset test will be the RIC’s allocable share of the underlying assets held by us and the relevant gross income for the RIC income test will be the RIC’s allocable share of the underlying gross income earned by us. Whether we will qualify as a “qualifying publicly traded partnership”

depends on the exact nature of our future investments, but it is likely that we will not be treated as a “qualifying publicly traded partnership.” In addition, as discussed above under “—Consequences to U.S. Holders of Common Units,” we may derive taxable income from an investment that is not matched by a corresponding cash distribution. Accordingly, a RIC investing in our common units may recognize income for U.S. federal income tax purposes without receiving cash with which to make distributions in amounts necessary to satisfy the distribution requirements under Sections 852 and 4982 of the Internal Revenue Code for avoiding income and excise taxes. RICs should consult their own tax advisors about the U.S. tax consequences of an investment in common units.

Consequences to Non-U.S. Holders of Common Units

U.S. Income Tax Consequences

In light of our intended investment activities, we generally do not expect to be treated as engaged in a U.S. trade or business or to generate significant amounts of ECI for non-U.S. Holders of our common units. However, there can be no assurance that we will not generate ECI currently or in the future and, subject to the qualifying income rules described under “Material U.S. Federal Tax Considerations—Taxation of our Partnership and the Carlyle Holdings Partnerships,” we are under no obligation to minimize ECI. Moreover there can be no assurance that the IRS will not successfully assert that we are engaged in a U.S. trade or business such that some portion of our income is properly treated as ECI. If a non-U.S. Holder were treated as being engaged in a U.S. trade or business in any year because of an investment in our common units in such year, such non-U.S. Holder generally would be (1) subject to withholding by us on any actual distributions, (2) required to file a U.S. federal income tax return for such year reporting its allocable share, if any, of income or loss effectively connected with such trade or business, including certain income from U.S. sources not related to The Carlyle Group L.P. and (3) required to pay U.S. federal income tax at regular U.S. federal income tax rates on any such income. Moreover, a corporate non-U.S. Holder might be subject to a U.S. branch profits tax on its allocable share of our ECI. Any amount so withheld would be creditable against such non-U.S. Holder’s U.S. federal income tax liability, and such non-U.S. Holder could claim a refund to the extent that the amount withheld exceeded such non-U.S. Holder’s U.S. federal income tax liability for the taxable year. Finally, if we were treated as being engaged in a U.S. trade or business, a portion of any gain recognized by a holder who is a non-U.S. Holder on the sale or exchange of its common units could be treated for U.S. federal income tax purposes as ECI, and hence such non-U.S. Holder could be subject to U.S. federal income tax on the sale or exchange of our common units.

Generally, under the Foreign Investment in Real Property Tax Act of 1980 (“FIRPTA”) provisions of the Internal Revenue Code, non-U.S. persons are subject to U.S. federal income tax in the same manner as U.S. persons on any gain realized on the disposition of an interest, other than an interest solely as a creditor, in U.S. real property. An interest in U.S. real property includes stock in a U.S. corporation (except for certain stock of publicly traded U.S. corporations) if interests in U.S. real property constitute 50% or more by value of the sum of the corporation’s assets used in a trade or business, its U.S. real property interests and its interests in real property located outside the United States (a “United States Real Property Holding Corporation” or “USRPHC”). The FIRPTA tax applies if a non-U.S. person is a holder of an interest in a partnership that realizes gain in respect of an interest in U.S. real property or an interest in a USRPHC. We may, from time to time, make certain investments (other than direct investments in U.S. real property), for example, through one of our investment funds held by Carlyle Holdings II GP L.L.C. that could constitute investments in U.S. real property or USRPHCs. If we make such investments, each non-U.S. Holder will be subject to U.S. federal income tax under FIRPTA on such holder’s allocable share of any gain we realize on the disposition of a FIRPTA interest and will be subject to the tax return filing requirements regarding ECI discussed above.

Although each non-U.S. Holder is required to provide an IRS Form W-8, we may not be able to provide complete information related to the tax status of our investors to Carlyle Holdings for purposes of obtaining reduced rates of withholding on behalf of our investors. Accordingly, to the extent we receive dividends from a U.S. corporation through Carlyle Holdings and its investment vehicles, your allocable share of distributions of such dividend income will be subject to U.S. withholding tax at a 30% rate, unless relevant tax status information

is provided. Distributions to you may also be subject to withholding to the extent they are attributable to the sale of a U.S. real property interest or if the distribution is otherwise considered fixed or determinable annual or periodic income under the Internal Revenue Code, provided that an exemption from or a reduced rate of such withholding may apply if certain tax status information is provided. If such information is not provided and you would not be subject to U.S. tax based on your tax status or are eligible for a reduced rate of U.S. withholding, you may need to take additional steps to receive a credit or refund of any excess withholding tax paid on your account, which may include the filing of a non-resident U.S. income tax return with the IRS. Among other limitations, if you reside in a treaty jurisdiction which does not treat our partnership as a pass-through entity, you may not be eligible to receive a refund or credit of excess U.S. withholding taxes paid on your account. You should consult your tax advisors regarding the treatment of U.S. withholding taxes.

Special rules may apply in the case of a non-U.S. Holder that (1) has an office or fixed place of business in the U.S., (2) is present in the U.S. for 183 days or more in a taxable year or (3) is a former citizen of the U.S., a foreign insurance company that is treated as holding a partnership interests in us in connection with their U.S. business, a PFIC or a corporation that accumulates earnings to avoid U.S. federal income tax. You should consult your tax advisors regarding the application of these special rules.

U.S. Federal Estate Tax Consequences

The U.S. federal estate tax treatment of our common units with regards to the estate of a non-citizen who is not a resident of the United States is not entirely clear. If our common units are includable in the U.S. gross estate of such person, then a U.S. federal estate tax might be payable in connection with the death of such person. Prospective individual non-U.S. Holders who are non-citizens and not residents of the United States should consult their own tax advisors concerning the potential U.S. federal estate tax consequences with regard to our units.

Administrative Matters

Taxable Year

We currently use the calendar year as our taxable year for U.S. federal income tax purposes. Under certain circumstances which we currently believe are unlikely to apply, a taxable year other than the calendar year may be required for such purposes.

Tax Matters Partner

Our general partner acts as our “tax matters partner.” As the tax matters partner, the general partner has the authority, subject to certain restrictions, to act on our behalf in connection with any administrative or judicial review of our items of income, gain, loss, deduction or credit.

Information Returns

We have agreed to furnish to you, as soon as reasonably practicable after the close of each calendar year, tax information (including Schedule K-1), which describes on a U.S. dollar basis your share of our income, gain, loss and deduction for our preceding taxable year. Although we currently intend to distribute Schedule K-1s on or around 90 days after the end of our fiscal year, it may require longer than 90 days after the end of our fiscal year to obtain the requisite information from all lower-tier entities so that K-1s may be prepared for us. Consequently, holders of common units who are U.S. taxpayers should anticipate that they may need to file annually with the IRS (and certain states) a request for an extension past April 15 or the otherwise applicable due date of their income tax return for the taxable year. In addition, each partner will be required to report for all tax purposes consistently with the information provided by us for the taxable year.

In preparing this information, we will use various accounting and reporting conventions, some of which have been mentioned in the previous discussion, to determine your share of income, gain, loss and deduction. The IRS may successfully contend that certain of these reporting conventions are impermissible, which could result in an adjustment to your income or loss.

We may be audited by the IRS. Adjustments resulting from an IRS audit may require you to adjust a prior year's tax liability and possibly may result in an audit of your own tax return. Any audit of your tax return could result in adjustments not related to our tax returns as well as those related to our tax returns.

Tax Shelter Regulations

If we were to engage in a "reportable transaction," we (and possibly you and others) would be required to make a detailed disclosure of the transaction to the IRS in accordance with recently issued regulations governing tax shelters and other potentially tax-motivated transactions. A transaction may be a reportable transaction based upon any of several factors, including the fact that it is a type of tax avoidance transaction publicly identified by the IRS as a "listed transaction" or that it produces certain kinds of losses in excess of \$2 million. An investment in us may be considered a "reportable transaction" if, for example, we recognize certain significant losses in the future. In certain circumstances, a common unitholder who disposes of an interest in a transaction resulting in the recognition by such holder of significant losses in excess of certain threshold amounts may be obligated to disclose its participation in such transaction. Our participation in a reportable transaction also could increase the likelihood that our U.S. federal income tax information return (and possibly your tax return) would be audited by the IRS. Certain of these rules are currently unclear and it is possible that they may be applicable in situations other than significant loss transactions.

Moreover, if we were to participate in a reportable transaction with a significant purpose to avoid or evade tax, or in any listed transaction, you may be subject to (i) significant accuracy-related penalties with a broad scope, (ii) for those persons otherwise entitled to deduct interest on federal tax deficiencies, non-deductibility of interest on any resulting tax liability, and (iii) in the case of a listed transaction, an extended statute of limitations.

Common unitholders should consult their tax advisors concerning any possible disclosure obligation under the regulations governing tax shelters with respect to the dispositions of their interests in us.

Constructive Termination

Subject to the electing large partnership rules described below, we will be considered to have been terminated for U.S. federal income tax purposes if there is a sale or exchange of 50% or more of the total interests in our capital and profits within a 12-month period.

Our termination would result in the close of our taxable year for all holders of common units. In the case of a holder reporting on a taxable year other than a fiscal year ending on our year-end, the closing of our taxable year may result in more than 12 months of our taxable income or loss being includable in the holder's taxable income for the year of termination. We would be required to make new tax elections after a termination, including a new tax election under Section 754 of the Internal Revenue Code if applicable. A termination could also result in penalties if we were unable to determine that the termination had occurred. Moreover, a termination might either accelerate the application of, or subject us to, any tax legislation enacted before the termination.

Elective Procedures for Large Partnerships

The Internal Revenue Code allows large partnerships to elect streamlined procedures for income tax reporting. This election would reduce the number of items that must be separately stated on the Schedules K-1 that are issued to the common unitholders, and such Schedules K-1 would have to be provided to common

unitholders on or before the first March 15 following the close of each taxable year. In addition, this election would prevent us from suffering a “technical termination” (which would close our taxable year) if within a 12-month period there is a sale or exchange of 50 percent or more of our total interests. It is possible we might make such an election, if eligible. If we make such election, IRS audit adjustments will flow through to holders of the common units for the year in which the adjustments take effect, rather than the holders of common units in the year to which the adjustment relates. In addition, we, rather than the holders of the common units individually, generally will be liable for any interest and penalties that result from an audit adjustment.

Treatment of Amounts Withheld

If we are required to withhold any U.S. tax on distributions made to any common unitholder, we may pay such withheld amount to the IRS. That payment, if made, will be treated as a distribution of cash to the common unitholder with respect to whom the payment was made and will reduce the amount of cash to which such common unitholder would otherwise be entitled.

Withholding and Backup Withholding

For each calendar year, we will report to you and the IRS the amount of distributions we made to you and the amount of U.S. federal income tax (if any) that we withheld on those distributions. The proper application to us of rules for withholding under Section 1441 of the Internal Revenue Code (applicable to certain dividends, interest and similar items) is unclear. Because the documentation we receive may not properly reflect the identities of partners at any particular time (in light of possible sales of common units), we may over-withhold or under-withhold with respect to a particular holder of common units. For example, we may impose withholding, remit that amount to the IRS and thus reduce the amount of a distribution paid to a non-U.S. Holder. It may turn out, however, the corresponding amount of our income was not properly allocable to such holder, and the withholding should have been less than the actual withholding. Such holder would be entitled to a credit against the holder’s U.S. tax liability for all withholding, including any such excess withholding, but if the withholding exceeded the holder’s U.S. tax liability, the holder would have to apply for a refund to obtain the benefit of the excess withholding. Similarly, we may fail to withhold on a distribution, and it may turn out the corresponding income was properly allocable to a non-U.S. Holder and withholding should have been imposed. In that event, we intend to pay the under-withheld amount to the IRS, and we may treat such under-withholding as an expense that will be borne by all partners on a pro rata basis (since we may be unable to allocate any such excess withholding tax cost to the relevant non-U.S. Holder).

Under the backup withholding rules, you may be subject to backup withholding tax (at the rate of 28%) with respect to distributions paid unless: (1) you are a corporation or come within another exempt category and demonstrate this fact when required or (2) you provide a taxpayer identification number, certify as to no loss of exemption from backup withholding tax and otherwise comply with the applicable requirements of the backup withholding tax rules. If you are an exempt holder, you should indicate your exempt status on a properly completed IRS Form W-9. A non-U.S. Holder may qualify as an exempt recipient by submitting a properly completed IRS Form W-8BEN. Backup withholding is not an additional tax. The amount of any backup withholding from a payment to you will be allowed as a credit against your U.S. federal income tax liability and may entitle you to a refund.

If you do not timely provide us (or the clearing agent or other intermediary, as appropriate) with IRS Form W-8 or W-9, as applicable, or such form is not properly completed, we may become subject to U.S. backup withholding taxes in excess of what would have been imposed had we received certifications from all investors. Such excess U.S. backup withholding taxes may be treated by us as an expense that will be borne by all investors on a pro rata basis (since we may be unable to allocate any such excess withholding tax cost to the holders that failed to timely provide the proper U.S. tax certifications).

Additional Withholding Requirements

Under legislation enacted in 2010, as well as final regulations and other administrative guidance, the relevant withholding agent may be required to withhold 30% of any interest, dividends and other fixed or determinable annual or periodical gains, profits and income from sources within the United States paid after June 30, 2014 or gross proceeds from the sale of any property of a type which can produce interest or dividends from sources within the United States occurring after December 31, 2016 paid to (i) a foreign financial institution (for which purposes includes foreign broker-dealers, clearing organizations, investment companies, hedge funds and certain other investment entities) unless such foreign financial institution agrees to verify, report and disclose its U.S. accountholders and meets certain other specified requirements or (ii) a non-financial foreign entity that is a beneficial owner of the payment unless such entity certifies that it does not have any substantial U.S. owners or provides the name, address and taxpayer identification number of each substantial U.S. owner and such entity meets certain other specified requirements or otherwise qualifies for an exemption from this withholding. Non-U.S. and U.S. Holders are encouraged to consult their own tax advisors regarding the possible implications of this proposed legislation on their investment in our common units.

Nominee Reporting

Persons who hold an interest in our partnership as a nominee for another person are required to furnish to us:

- (a) the name, address and taxpayer identification number of the beneficial owner and the nominee;
- (b) whether the beneficial owner is (1) a person that is not a U.S. person, (2) a foreign government, an international organization or any wholly-owned agency or instrumentality of either of the foregoing, or (3) a tax-exempt entity;
- (c) the amount and description of common units held, acquired or transferred for the beneficial owner; and
- (d) specific information including the dates of acquisitions and transfers, means of acquisitions and transfers and acquisition cost for purchases, as well as the amount of net proceeds from sales.

Brokers and financial institutions are required to furnish additional information, including whether they are U.S. persons and specific information on common units they acquire, hold or transfer for their own account. A penalty of \$50 per failure, up to a maximum of \$100,000 per calendar year, is imposed by the Internal Revenue Code for failure to report that information to us. The nominee is required to supply the beneficial owner of the common units with the information furnished to us.

New Legislation or Administrative or Judicial Action

The U.S. federal income tax treatment of common unitholders depends in some instances on determinations of fact and interpretations of complex provisions of U.S. federal income tax law for which no clear precedent or authority may be available.

The rules dealing with U.S. federal income taxation are constantly under review by persons involved in the legislative process, the IRS and the U.S. Treasury Department, frequently resulting in revised interpretations of established concepts, statutory changes, revisions to regulations and other modifications and interpretations. No assurance can be given as to whether, or in what form, any proposals affecting us or our common unitholders will be enacted. The IRS pays close attention to the proper application of tax laws to partnerships. The present U.S. federal income tax treatment of an investment in our common units may be modified by administrative, legislative or judicial interpretation at any time, and any such action may affect investments and commitments previously made. Changes to the U.S. federal income tax laws and interpretations thereof could make it more difficult or impossible to meet the Qualifying Income Exception for us to be treated as a partnership that is not taxable as a corporation for U.S. federal income tax purposes, affect or cause us to change our investments and commitments, affect the tax considerations of an investment in us, change the character or treatment of portions

of our income (including, for instance, the treatment of carried interest as ordinary income rather than capital gain) and adversely affect an investment in our common units. See “Risk Factors—Risks Related to U.S. Taxation—Our structure involves complex provisions of U.S. federal income tax law for which no clear precedent or authority may be available. Our structure also is subject to potential legislative, judicial or administrative change and differing interpretations, possibly on a retroactive basis,” “Risk Factors—Risks Related to Our Company—Although not enacted, the U.S. Congress has considered legislation that would have: (i) in some cases after a ten-year transition period, precluded us from qualifying as a partnership for U.S. federal income tax purposes or required us to hold carried interest through taxable subsidiary corporations; and (ii) taxed certain income and gains at increased rates. If any similar legislation were to be enacted and apply to us, the after tax income and gain related to our business, as well as our distributions to common unitholders and the market price of our common units, could be reduced” and “Risk Factors—Risks Related to Our Company—Additional proposed changes in the U.S. taxation of businesses could adversely affect us,” as described on the section entitled “Risk Factors” in our Annual Report, which is incorporated by reference in this prospectus. In addition, statutory changes, revisions to regulations and other modifications and interpretations with respect to the tax laws of the states and other jurisdictions in which we operate could result in us or our common unitholders having to pay additional taxes. Our organizational documents and agreements permit the board of directors to modify the amended and restated operating agreement from time to time, without the consent of the common unitholders, in order to address certain changes in U.S. federal and state income tax regulations, legislation or interpretation. In some circumstances, such revisions could have a material adverse impact on some or all of our common unitholders.

THE FOREGOING DISCUSSION IS NOT INTENDED AS A SUBSTITUTE FOR CAREFUL TAX PLANNING. THE TAX MATTERS RELATING TO CARLYLE AND ITS UNITHOLDERS ARE COMPLEX AND ARE SUBJECT TO VARYING INTERPRETATIONS. MOREOVER, THE MEANING AND IMPACT OF TAX LAWS AND OF PROPOSED CHANGES WILL VARY WITH THE PARTICULAR CIRCUMSTANCES OF EACH PROSPECTIVE UNITHOLDER. PROSPECTIVE UNITHOLDERS SHOULD CONSULT THEIR TAX ADVISORS WITH RESPECT TO THE FEDERAL, STATE, LOCAL AND OTHER TAX CONSEQUENCES OF ANY INVESTMENT IN THE COMMON UNITS.

UNDERWRITING

We and J.P. Morgan Securities L.L.C., Citigroup Global Markets Inc. and Goldman, Sachs & Co., as representatives (the “representatives”) of the several underwriters, have entered into an underwriting agreement with respect to the common units being offered. Subject to certain conditions, each underwriter has severally agreed to purchase the number of common units indicated in the following table:

<u>Underwriter</u>	<u>Number of Common Units</u>
J.P. Morgan Securities L.L.C.	2,884,800
Citigroup Global Markets Inc.	2,884,800
Goldman, Sachs & Co.	2,884,800
Credit Suisse Securities (USA) LLC	1,442,400
Merrill Lynch, Pierce, Fenner & Smith Incorporated.	1,442,400
Sandler O’Neill & Partners, L.P.	460,800
Total	<u>12,000,000</u>

The underwriters are committed to take and pay for all of the common units being offered, if any are taken, other than the common units covered by the option described below unless and until this option is exercised.

In addition, the underwriters have an option to buy up to an additional 1,800,000 common units from us. They may exercise that option for 30 days. If any common units are purchased pursuant to this option, the underwriters will severally purchase common units in approximately the same proportion as set forth in the table above.

The following table shows the per unit and total underwriting discount to be paid to the underwriters by us. Such amounts are shown assuming both no exercise and full exercise of the underwriters’ option to purchase 1,800,000 additional common units from the us.

	<u>Paid by Us</u>	
	<u>No Exercise</u>	<u>Full Exercise</u>
Per common unit	\$ 0.871	\$ 0.871
Total	\$ 10,452,000.00	\$ 12,019,800.00

Common units sold by the underwriters to the public will initially be offered at the public offering price set forth on the front cover of this prospectus. If all the common units are not sold at the public offering price, the underwriters may change the offering price and the other selling terms. The offering of the common units by the underwriters is subject to receipt and acceptance and subject to the underwriters’ right to reject any order in whole or in part.

We have agreed that we will not (i) offer, pledge, announce the intention to sell, sell, contract to sell, sell any option or contract to purchase, purchase any option or contract to sell, grant any option, right or warrant to purchase, lend or otherwise transfer or dispose of, directly or indirectly, or file with the SEC a registration statement under the Securities Act relating to, any of our common units or securities convertible into or exchangeable or exercisable for our common units, or publicly disclose the intention to make any offer, sale, pledge, disposition or filing, or (ii) enter into any swap or other arrangement that transfers, in whole or in part, any of the economic consequences of ownership of any of our common units or any such other securities (regardless of whether any of these transactions are to be settled by the delivery of common units or such other securities, in cash or otherwise), in each case without the prior written consent of the representatives for a period of 90 days after the date of this prospectus. These restrictions do not apply to certain sales, issuances, distributions and transfers.

The directors and officers of our general partner and Mubadala have entered into lock up agreements with the underwriters prior to the commencement of this offering pursuant to which each of these persons or entities, with limited exceptions, for a period of 90 days after the date of this prospectus, may not, without the prior written consent of the representatives, (1) offer, pledge, sell, contract to sell, sell any option or contract to purchase, purchase any option or contract to sell, grant any option, right or warrant to purchase, lend or otherwise transfer or dispose of, directly or indirectly, any of our common units or any securities convertible into or exercisable or exchangeable for our common units (including, without limitation, common units or such other securities which may be deemed to be beneficially owned by such directors, executive officers, and in accordance with the rules and regulations of the SEC and securities which may be issued upon exercise of an option or warrant) or publicly disclose the intention to make any offer, sale, pledge or disposition or (2) enter into any swap or other agreement that transfers, in whole or in part, any of the economic consequences of ownership of the common units or such other securities, whether any such transaction described in clause (1) or (2) above is to be settled by delivery of common units or such other securities, in cash or otherwise, or (3) make any demand for or exercise any right with respect to the registration of any of our common units or any security convertible into or exercisable or exchangeable for our common units. These restrictions do not apply to the sale of common units to the underwriters pursuant to the underwriting agreement or to certain sales, issuances, distributions and transfers.

The representatives in their sole discretion may release any of the securities subject to these lock-up agreements at any time without notice. The representatives have no present intent or arrangement to release any of the securities subject to these lock-up agreements. The release of any lock-up is considered on a case-by-case basis. Factors in deciding whether to release common units may include the length of time before the lock-up expires, the number of common units involved, the reason for the requested release, market conditions, the trading price of our common units, historical trading volumes of our common units and whether the person seeking the release is an officer, director or affiliate of us.

Our common units are listed on the NASDAQ Global Select Market under the symbol "CG." The last reported sale price of the common units on the NASDAQ Global Select Market on March 3, 2014 was \$35.50 per common unit.

In connection with this offering, the underwriters may purchase and sell common units in the open market. These transactions may include short sales, stabilizing transactions and purchases to cover positions created by short sales. Short sales involve the sale by the underwriters of a greater number of common units than they are required to purchase in this offering. "Covered" short sales are sales made in an amount not greater than the underwriters' option to purchase additional common units from us. The underwriters may close out any covered short position by either exercising their option to purchase additional common units or purchasing common units in the open market. In determining the source of common units to close out the covered short position, the underwriters will consider, among other things, the price of common units available for purchase in the open market as compared to the price at which they may purchase additional common units pursuant to the option granted to them. "Naked" short sales are any sales in excess of such option. The underwriters must close out any naked short position by purchasing common units in the open market. A naked short position is more likely to be created if the underwriters are concerned that there may be downward pressure on the price of the common units in the open market after pricing that could adversely affect investors who purchase in this offering. Stabilizing transactions consist of various bids for or purchases of common units made by the underwriters in the open market prior to the completion of the offering.

The underwriters may also impose a penalty bid. This occurs when a particular underwriter repays to the underwriters a portion of the underwriting discount received by it because the representatives have repurchased common units sold by or for the account of such underwriter in stabilizing or short covering transactions.

Purchases to cover a short position and stabilizing transactions, as well as other purchases by the underwriters for their own accounts, may have the effect of preventing or retarding a decline in the market price of our common units, and together with the imposition of the penalty bid, may stabilize, maintain or otherwise

affect the market price of our common units. As a result, the price of our common units may be higher than the price that otherwise might exist in the open market. If these activities are commenced, they may be discontinued at any time. These transactions may be effected on the NASDAQ Global Select Market, in the over-the-counter market or otherwise.

We estimate that the expenses of this offering payable by us, other than underwriting discounts, will be approximately \$739,370.

We have agreed to indemnify the several underwriters against certain liabilities, including liabilities under the Securities Act.

Relationships

The underwriters and their respective affiliates are full service financial institutions engaged in various activities, which may include securities trading, commercial and investment banking, financial advisory, investment management, investment research, principal investment, hedging, financing and brokerage activities. Certain of the underwriters and their respective affiliates have from time to time performed, and may in the future perform, various financial advisory and investment banking services for the company and its affiliates, including our investment funds and our funds portfolio companies, for which they received, or will receive, customary fees and expenses. In particular, J.P. Morgan Securities LLC, Citigroup Global Markets Inc., Goldman, Sachs & Co., Credit Suisse Securities (USA) LLC, and Merrill Lynch, Pierce, Fenner & Smith Incorporated and/or certain of their respective affiliates act as joint lead arrangers and bookrunners, syndication agents and/or lenders under our revolving credit facility. Certain employees of the underwriters or their affiliates invest in investment funds managed by Carlyle or its affiliates.

In addition, an investment fund that we manage has an indirect minority investment in Sandler O'Neill & Partners, L.P., an underwriter in this offering. Accordingly, Sandler O'Neill & Partners, L.P. may be deemed to be our affiliate within the meaning of Rule 2310. In accordance with Rule 2310, the underwriters in this offering will not confirm sales of the common units to any account over which they exercise discretionary authority without the prior written approval of the customer.

In the ordinary course of their various business activities, the underwriters and their respective affiliates may make or hold a broad array of investments and actively trade debt and equity securities (or related derivative securities) and financial instruments (including bank loans) for their own account and for the accounts of their customers, and such investment and securities activities may involve securities and/or instruments of the issuer.

The underwriters and their respective affiliates may also make investment recommendations and/or publish or express independent research views in respect of such securities or instruments and may at any time hold, or recommend to clients that they acquire, long and/or short positions in such securities and instruments.

Solebury Capital LLC ("Solebury"), a FINRA member, is acting as our financial advisor in connection with the offering. We expect to pay Solebury, upon the successful completion of this offering, a fee of \$225,000.00 for its services. We have also agreed to reimburse Solebury for certain expenses incurred in connection with the engagement of up to \$25,000. Solebury is not acting as an underwriter and will not sell or offer to sell any securities and will not identify, solicit or engage directly with potential investors. In addition, Solebury will not underwrite or purchase any of the offered securities or otherwise participate in any such undertaking.

European Economic Area

In relation to each Member State of the European Economic Area which has implemented the Prospectus Directive (each, a Relevant Member State), each underwriter has represented and agreed that with effect from and including the date on which the Prospectus Directive is implemented in that Relevant Member State (the Relevant Implementation Date) it has not made and will not make an offer of common units to the public in that Relevant Member State prior to the publication of a prospectus in relation to the common units which has been

approved by the competent authority in that Relevant Member State or, where appropriate, approved in another Relevant Member State and notified to the competent authority in that Relevant Member State, all in accordance with the Prospectus Directive, except that it may, with effect from and including the Relevant Implementation Date, make an offer of common units to the public in that Relevant Member State at any time:

- (a) to legal entities which are authorized or regulated to operate in the financial markets or, if not so authorized or regulated, whose corporate purpose is solely to invest in securities;
- (b) to any legal entity which has two or more of (1) an average of at least 250 employees during the last financial year; (2) a total balance sheet of more than €43,000,000 and (3) an annual net turnover of more than €50,000,000, as shown in its last annual or consolidated accounts;
- (c) to fewer than 100 natural or legal persons (other than qualified investors as defined in the Prospectus Directive) subject to obtaining the prior consent of the representatives for any such offer; or
- (d) in any other circumstances which do not require the publication by us of a prospectus pursuant to Article 3 of the Prospectus Directive.

For the purposes of this provision, the expression an “offer of common units to the public” in relation to any common units in any Relevant Member State means the communication in any form and by any means of sufficient information on the terms of the offer and the common units to be offered so as to enable an investor to decide to purchase or subscribe for the common units, as the same may be varied in that Relevant Member State by any measure implementing the Prospectus Directive in that Relevant Member State and the expression Prospectus Directive means Directive 2003/71/EC and includes any relevant implementing measure in each Relevant Member State.

Each underwriter has represented and agreed that:

- (a) it has only communicated or caused to be communicated and will only communicate or cause to be communicated an invitation or inducement to engage in investment activity (within the meaning of Section 21 of the Financial Services and Markets Act (the “FSMA”) received by it in connection with the issue or sale of the common units in circumstances in which Section 21(1) of the FSMA does not apply to us; and
- (b) it has complied and will comply with all applicable provisions of the FSMA with respect to anything done by it in relation to the common units in, from or otherwise involving the United Kingdom.

Hong Kong

The common units may not be offered or sold by means of any document other than (i) in circumstances which do not constitute an offer to the public within the meaning of the Companies Ordinance (Cap. 32, Laws of Hong Kong), or (ii) to “professional investors” within the meaning of the Securities and Futures Ordinance (Cap. 571, Laws of Hong Kong) and any rules made thereunder, or (iii) in other circumstances which do not result in the document being a “prospectus” within the meaning of the Companies Ordinance (Cap. 32, Laws of Hong Kong), and no advertisement, invitation or document relating to the common units may be issued or may be in the possession of any person for the purpose of issue (in each case whether in Hong Kong or elsewhere), which is directed at, or the contents of which are likely to be accessed or read by, the public in Hong Kong (except if permitted to do so under the laws of Hong Kong) other than with respect to common units which are or are intended to be disposed of only to persons outside Hong Kong or only to “professional investors” within the meaning of the Securities and Futures Ordinance (Cap. 571, Laws of Hong Kong) and any rules made thereunder.

Singapore

This prospectus has not been registered as a prospectus with the Monetary Authority of Singapore. Accordingly, this prospectus and any other document or material in connection with the offer or sale, or invitation for subscription or purchase, of the common units may not be circulated or distributed, nor may the

common units be offered or sold, or be made the subject of an invitation for subscription or purchase, whether directly or indirectly, to persons in Singapore other than (i) to an institutional investor under Section 274 of the Securities and Futures Act, Chapter 289 of Singapore (the “SFA”), (ii) to a relevant person, or any person pursuant to Section 275(1A), and in accordance with the conditions, specified in Section 275 of the SFA or (iii) otherwise pursuant to, and in accordance with the conditions of, any other applicable provision of the SFA.

Where the common units are subscribed or purchased under Section 275 by a relevant person which is: (a) a corporation (which is not an accredited investor) the sole business of which is to hold investments and the entire share capital of which is owned by one or more individuals, each of whom is an accredited investor; or (b) a trust (where the trustee is not an accredited investor) whose sole purpose is to hold investments and each beneficiary is an accredited investor, shares, debentures and units of shares and debentures of that corporation or the beneficiaries’ rights and interest in that trust shall not be transferable for 6 months after that corporation or that trust has acquired the common units under Section 275 except: (1) to an institutional investor under Section 274 of the SFA or to a relevant person, or any person pursuant to Section 275(1A), and in accordance with the conditions, specified in Section 275 of the SFA; (2) where no consideration is given for the transfer; or (3) by operation of law.

Japan

The securities have not been and will not be registered under the Financial Instruments and Exchange Law of Japan (the Financial Instruments and Exchange Law) and each underwriter has agreed that it will not offer or sell any securities, directly or indirectly, in Japan or to, or for the benefit of, any resident of Japan (which term as used herein means any person resident in Japan, including any corporation or other entity organized under the laws of Japan), or to others for re-offering or resale, directly or indirectly, in Japan or to a resident of Japan, except pursuant to an exemption from the registration requirements of, and otherwise in compliance with, the Financial Instruments and Exchange Law and any other applicable laws, regulations and ministerial guidelines of Japan.

Switzerland

This prospectus does not constitute an issue prospectus pursuant to Article 652a or Article 1156 of the Swiss Code of Obligations and the common units will not be listed on the SIX Swiss Exchange. Therefore, this prospectus may not comply with the disclosure standards of the listing rules (including any additional listing rules or prospectus schemes) of the SIX Swiss Exchange. Accordingly, the common units may not be offered to the public in or from Switzerland, but only to a selected and limited circle of investors who do not subscribe to the common units with a view to distribution. Any such investors will be individually approached by the underwriters from time to time.

Bermuda

The offering of the common units to investors in Bermuda may constitute carrying on business in Bermuda for purposes of the Companies Act 1981 (the “Bermuda Companies Act”). Carrying on business in Bermuda by an overseas company requires a license under Section 134 of the Bermuda Companies Act. We are an overseas company and are not licensed under Section 134 of the Bermuda Companies Act. As long as we do not have a physical presence in Bermuda and the common units are offered to Bermuda investors only at such time as they are outside of Bermuda, such offering will generally not constitute carrying on business in Bermuda. The offering of the common units to investors in Bermuda may, in some circumstances, require a license to carry on investment business under the Investment Business Act 2003 of Bermuda. However, such requirement will only apply where the person or entity offering the common units has a physical presence in Bermuda. Neither we nor any of the underwriters has a physical presence in Bermuda.

This prospectus relates to an Exempt Offer in accordance with the Offered Securities Rules of the Dubai Financial Services Authority (“DFSA”). This prospectus is intended for distribution only to persons of a type specified in the Offered Securities Rules of the DFSA. It must not be delivered to, or relied on by, any other person. The DFSA has no responsibility for reviewing or verifying any documents in connection with Exempt Offers. The DFSA has not approved this prospectus nor taken steps to verify the information set forth herein and has no responsibility for the prospectus. The common units to which this prospectus relates may be illiquid and/or subject to restrictions on their resale. Prospective purchasers of the common units offered should conduct their own due diligence on the common units. If you do not understand the contents of this prospectus you should consult an authorized financial advisor.

LEGAL MATTERS

The validity of the common units representing limited partner interests will be passed upon for us by Simpson Thacher & Bartlett LLP, New York, New York. An investment vehicle composed of certain partners of Simpson Thacher & Bartlett LLP, members of their families, related parties and others owns interests representing less than 1% of the capital commitments of certain investment funds advised by Carlyle. Certain legal matters in connection with this offering will be passed upon for the underwriters by Skadden, Arps, Slate, Meagher & Flom LLP, New York, New York. Skadden, Arps, Slate, Meagher & Flom LLP has in the past performed, and may continue to perform, legal services for Carlyle.

EXPERTS

The consolidated financial statements of The Carlyle Group L.P. appearing in The Carlyle Group L.P.'s Annual Report (Form 10-K) for the year ended December 31, 2013, and the effectiveness of The Carlyle Group L.P.'s internal control over financial reporting as of December 31, 2013 have been audited by Ernst & Young LLP, independent registered public accounting firm, as set forth in their reports thereon, included therein, and incorporated herein by reference. Such consolidated financial statements and The Carlyle Group L.P. management's assessment of the effectiveness of internal control over financial reporting as of December 31, 2013 are incorporated herein by reference in reliance upon such reports given on the authority of such firm as experts in accounting and auditing.

WHERE YOU CAN FIND MORE INFORMATION

We have filed with the SEC a registration statement on Form S-3 under the Securities Act with respect to the common units offered in this prospectus. This prospectus, filed as part of the registration statement, does not contain all of the information set forth in the registration statement and its exhibits and schedules, portions of which have been omitted as permitted by the rules and regulations of the SEC. For further information about us and our common units, we refer you to the registration statement and to its exhibits and schedules. Statements in this prospectus about the contents of any contract, agreement or other document are not necessarily complete and, in each instance, we refer you to the copy of such contract, agreement or document filed as an exhibit to the registration statement, with each such statement being qualified in all respects by reference to the document to which it refers. Anyone may inspect the registration statement and its exhibits and schedules without charge at the public reference facilities the SEC maintains at 100 F Street, N.E., Washington, D.C. 20549. You may obtain copies of all or any part of these materials from the SEC upon the payment of certain fees prescribed by the SEC. You may obtain further information about the operation of the SEC's Public Reference Room by calling the SEC at 1-800-SEC-0330. You may also inspect these reports and other information without charge at a website maintained by the SEC. The address of this site is <http://www.sec.gov>.

We are subject to the informational requirements of the Securities Exchange Act of 1934, as amended, and are required to file reports and other information with the SEC. You may inspect and copy these reports and other information at the public reference facilities maintained by the SEC at the address noted above. You also are able to obtain copies of this material from the Public Reference Room of the SEC as described above, or inspect them without charge at the SEC's website. We intend to make available to our common unitholders annual reports containing consolidated financial statements audited by an independent registered public accounting firm.

The SEC's rules allow us to "incorporate by reference" information into this prospectus. This means that we can disclose important information to you by referring you to another document. Any information referred to in this way is considered part of this prospectus from the date we file that document. Any reports filed by us with the SEC after the date of this prospectus and before the date that the offerings of the common units by means of this prospectus are terminated will automatically update and, where applicable, supersede any information contained in this prospectus or incorporated by reference in this prospectus.

We incorporate by reference into this prospectus the following documents or information filed with the SEC:

- Annual Report on Form 10-K for the fiscal year ended December 31, 2013, filed on February 27, 2014 (File No. 001-35538);
- Registration Statement on Form 8-A for registration of the common units pursuant to Section 12(b) of the Exchange Act, filed on May 3, 2012; and
- All documents filed, but not furnished, by The Carlyle Group L.P. under Sections 13(a), 13(c), 14 or 15(d) of the Exchange Act after the date of this prospectus and before the termination of the offerings to which this prospectus relates.

We will provide without charge to each person, including any beneficial owner, to whom this prospectus is delivered, upon his or her written or oral request, a copy of any or all documents referred to above which have been or may be incorporated by reference into this prospectus, excluding exhibits to those documents unless they are specifically incorporated by reference into those documents. You may request copies of those documents from The Carlyle Group L.P., 1001 Pennsylvania Avenue, NW, Washington, D.C. 20004. You also may contact us at (202) 729-5626 or visit our website at <http://www.carlyle.com> for copies of those documents. Our website and the information contained on our website are not a part of this prospectus, and you should not rely on any such information in making your decision whether to invest in our common units.

THE CARLYLE GROUP
